

# PROXXON

## BS/A



## Manual

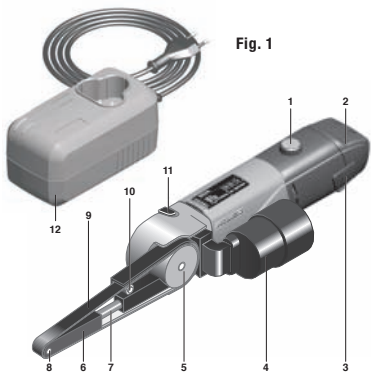


Fig. 1

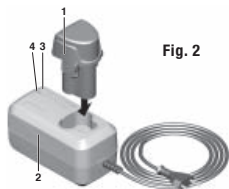


Fig. 2

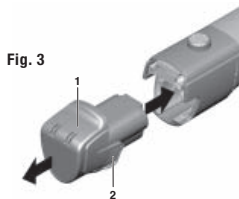


Fig. 3

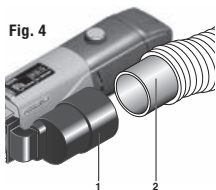


Fig. 4

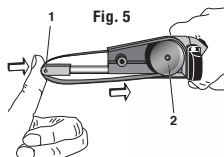


Fig. 5

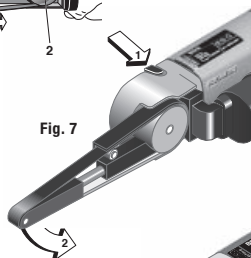


Fig. 7

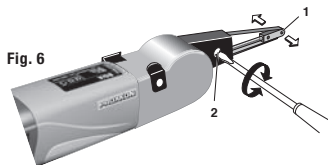
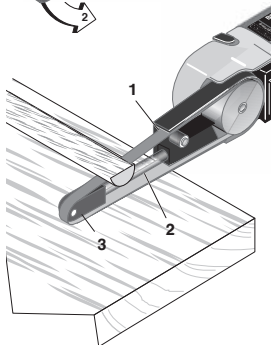


Fig. 6

Fig. 8





## Original operating instructions PROXXON - BS/A

Dear customer!

*Always keep these operating instructions and the enclosed safety guidelines within reach.*

*Only use this device with exact knowledge of it and comply with the instructions and safety guidelines!*

*This is necessary to ensure safe operation and, secondly, it facilitates familiarisation with the device and its functions.*

*Proxxon assumes no liability for the safe function of the device in the case of:*

- handling that does not comply with normal intended use,
- use for other purposes not mentioned in the manual,
- incorrectly executed repairs,
- failure to heed safety instructions,
- external effects for which the manufacturer is not responsible.

*We recommend using PROXXON original spare parts for all repair and maintenance work.*

*Repairs should only be performed by qualified skilled personnel!*

*Please note: All information contained in these operating instructions - especially the technical data - corresponds to the status at the time of printing.*

*We reserve the right to make further developments in the interest of technical progress. We wish you every success with the device.*

### **Warning!**



**Read through all safety guidelines and instructions!**

Failure to adhere to safety guidelines and instructions can result in electrical shock, fire and/or serious injuries as consequence.



Store all safety guidelines and instructions for the future.

### **Warning**

Always wear protective goggles



Only for use in dry rooms



Charger LG/A

Protection class II device



Do not dispose of the power tool, charger or battery with household rubbish!



Wear hearing protection!



### **Description of the machine**

The PROXXON BS/A belt sander is a light, compact and handy device ideal for model, tool and mould construction but which can also be used for the repair of motor vehicles.

Application examples are

- grinding in of grooves
- correcting of especially inaccessible areas
- re-sanding of especially complexly formed shapes
- grinding out of small openings and break-throughs, regardless of the materials, and also high-strength steels
- straightening, smooth sanding and high-shine polishing of surfaces: the pulled grinding does not leave annoying grinding marks
- grinding of saw blades, chisels and even cutting tools
- precision polishing of surfaces
- removal of paints and varnishes
- rounding off of edges
- deburring and chamfering of precision parts, etc.

The high-grade corundum sanding belts enable machining of metal, plastic and wood.

An extremely robust gearbox transfers the motive force to the driving roller for the sanding belt at the gear head.

This runs on the grinding head where it is diverted by a tightening roller at the front end.

The grinding head can be swivelled to enable work even at inaccessible areas.

## 1 Key (Fig. 1)

---

1. Rotational speed regulating knob with On/Off switch
2. Battery
3. Battery release button
4. Adapter for dust extraction
5. Driving roller
6. Grinding head to belt guide
7. Stretcher
8. Tightening roller
9. Grinding belt
10. Adjusting screw for belt running
11. Locking button
12. Charger

## 2 Technical data

---

### Dimensions, weight:

Length:	approx. 330 mm
Weight:	approx. 650 g
Grinding belt length:	330 x 10 mm
Head can be swivelled by	60°

### Motor:

Voltage:	10.8 V
Band speed:	200 to 700 m/min
Noise generation:	LPA: 90 dB(A)
LWA: 103 dB(A)	
General measuring uncertainty:	K=3dB
Grip vibration:	≤ 2.5 m/sec <sup>2</sup>

### Noise/vibration information

The information on vibration and noise emission has been determined in compliance with the prescribed standardised and normative measuring methods and can be used to compare electrical devices and tools with each other.

These values also allow a preliminary evaluation of the loads caused by vibration and noise emissions.

### **Warning!**

Depending on the operating conditions while operating the device, the actually occurring emissions could differ from the values specified above!

Please bear in mind that the vibration and noise emission can deviate from the values given in these instructions, depending on the conditions of use of the tool. Poorly maintained tools, inappropriate working methods, different work pieces, too high a feed or unsuitable work pieces or materials or unsuitable bits and cutters can significantly increase the vibration load and noise emission across the entire work period.

To more accurately estimate the actual vibration and noise load, also take the times into consideration where the device is switched off, or is running but is not actually in use. This can clearly reduce the vibration and noise load across the entire work period.

### **Warning:**

- Ensure regular and proper maintenance of your tool
- Stop operation of the tool immediately if excessive vibration occurs!
- Unsuitable bits and cutters can cause excessive vibration and noises. Only use suitable bits and cutters!
- Take breaks if necessary when working with the device!

Please note that the sound and vibration measurements in particular have been performed with Proxxon bits and cutters. When using third-party brands we cannot guarantee compliance with the statements given here!

### **Charger:**

Mains voltage:	100-240 V~50/60Hz
Output voltage:	12.6 V
Charging current:	1 A

## Battery:

Rechargeable lithium-ion battery

Nominal/charging voltage: 10.8V/12.6V

Energy/Capacity: 28.19Wh/2.61Ah  
3 INR 19/66

## 3 Scope of delivery

---

### BS/A (29810)

- 1 pc. Belt sander BS/A
- 1 pc. Connection adapter
- 1 pc. Rubber connecting piece
- 1 pc. Storage case
- 1 pc. Charger
- 1 pc. Battery
- 1 pc. Operating instructions
- 1 pc. Safety guidelines
- 2 pcs. Fan sander K 80
- 2 pcs. Fan sander K 180

### BS/A (29812)

- 1 pc. Belt sander BS/A
- 1 pc. Connection adapter
- 1 pc. Rubber connecting piece
- 1 pc. Operating instructions
- 1 pc. Safety guidelines
- 2 pcs. Fan sander K 80
- 2 pcs. Fan sander K 180

## 4 Commissioning and operation

---

### Caution:

Before starting up, read the warning instructions and the labels attached to the charger and the battery!

### Use and handling of battery-powered tool

- Batteries should only be charged with the chargers recommended by the manufacturer.** A charger suitable for a certain type of battery poses a fire hazard if used with other batteries.
- Use only the designated batteries in the power tools.** The use of other batteries can

cause injuries and pose a fire hazard.

- Keep unused batteries away from paper clips, coins, keys, nails, screws and other small metal objects which could bridge the contacts.** A short-circuit between the battery contacts can cause burns or fire.
- If used incorrectly, the battery can leak fluids. Avoid contact. In the event of incidental contact, rinse with water. If the fluid gets into your eyes, seek medical assistance.** Leaking battery fluids can cause skin irritations or burns.
- Do not use a damaged or modified battery.** Damaged or modified batteries can behave unpredictably and cause fires, explosions or injuries.
- Never expose a battery to fire or excessive temperatures.** Fire or temperatures above 130°C can cause an explosion.
- Observe all charging instructions and never charge the battery or battery-powered tool outside the temperature range specified by the operating instructions.** Incorrect charging or charging outside the approved temperature range can destroy the battery and increase the risk of fire.

## Service

- Have your power tool repaired only by qualified specialists and use only original spare parts.** This ensures that the power tool remains safe to operate.
- Never service damaged batteries.** All maintenance work on batteries should only be carried out by the manufacturer or authorised customer service centres.

## Charging the battery (Fig. 2 and 3)

**Please note:** The device, battery and charger are also separately available at retailers!

When delivered, the battery is partially charged and must be charged completely before commissioning the device. To do so, proceed as follows:

1. Insert the plug of the charger.
2. Insert battery 1 in the charger 2 as shown in Fig. 2.
3. The yellow light-emitting diode 3 signals the charging process. When completed, the green light-emitting diode 4 lights up.
4. Remove the completely charged battery from the charger.
5. Insert battery 1 as shown in Fig. 3 in the housing opening of the device until it engages.

To protect the battery from harmful total discharge while in operation, the charge status is permanently monitored electronically and the device will switch off before it reaches the critical discharge condition. The battery will now need to be recharged. Do not attempt to put the device back into operation with a discharged battery!

6. To charge, press the release buttons 2, pull out the battery to the rear and carry out steps 1-5.

The charging process can be interrupted at any time and continued without damage to the battery.

#### **Caution:**

Drastically reduced operating times after the charging process indicates that the battery needs to be replaced!

If after inserting the battery into its designated opening the light-emitting diode flashes instead of glowing yellow continuously, the cause may be a too high temperature, a defect, or the total discharge of the battery.

- If the battery is too hot, the charging process will start automatically after it cools down.
- If, on the other hand, the battery has a normal temperature but is totally discharged, the charger will check if it still draws power or if it is already defective.
- If the battery can be recovered, the yellow light-emitting diode will glow continuously after some time, signalling the successful

charging process.

- If the yellow light-emitting diode flashes, the battery is defective and needs to be disposed of; see also "Note on disposal within the EU" later on in these instructions.

#### **General handling of the device:**

##### **Caution!**

#### **Ensure the work piece is fixed securely!**

Loose work pieces should be clamped in a suitable fixture. This prevents the work pieces from flying about

##### **Danger!**

#### **Please wear a dust mask as necessary!**

Some types of wood or even varnish residues (or similar) can generate harmful dusts while working. If you are unsure of the harmlessness of your material to be ground, please wear a dust protection mask! Ensure the work place is well ventilated in any case and work with a vacuum cleaner for dust extraction as necessary!

#### **Hold power tool by insulated gripping surfaces, when performing an operation where the cutting accessory may contact hidden wiring or its own cord.**

Cutting accessory contacting a "live" wire may make exposed metal parts of the power tool "live" and could give the operator an electric shock.

##### **Caution:**

The battery must be removed from the device before assembly, adjustment (except the belt running adjustment), maintenance measures or repair!

#### **Connect the vacuum cleaner (Fig. 4)**

We recommend to always work with the dust extraction. Our "Compact Workshop Vacuum Cleaner CW-matic" with automatic cut-off is ideal for this use.

1. Put connection adapter 1 on the connecting piece of the device
2. Put on the rubber connecting piece 2 and insert the vacuum cleaner hose. The flexible

rubber material makes it possible to use different diameters.

### **Changing the grinding belt (Fig. 5)**

1. Press the tightening roller 1 axially and remove grinding belt from driving roller 2.
2. Place the new grinding belt first over the tightening roller 1. Then press the tightening roller towards the back and place the belt over the driving roller 2.

### **Adjusting the grinding roller (Fig. 6)**

The grinding belt must run centrally on the tightening roller. If not, it needs to be readjusted.

#### **Caution, risk of injury!**

The device must run with this setting. Please proceed with the greatest possible caution for the belt running adjustment!

The running belt represents a potential hazard and can cause injuries if the device is handled carelessly!

1. Switch on the device by turning the button 1 and setting the small belt speed.
2. Turn the adjusting screw 2 to the left or right until the belt runs centrally on the tightening roller 1.

### **Adjusting the grinding head (Fig. 7)**

1. Press in locking button 1 whilst adjusting the grinding head 2 to the desired angle.
2. Release the locking button. The grinding head engages.

### **Working with the device (Fig. 8)**

1. Activate the device with the rotational speed regulating knob (1, Fig. 1) and set the right speed for the work.
2. The grinding surface 2 is particularly suited for machining flat surfaces.
3. Grinding surface 1 is best used to grind curves.
4. Face side 3 is suited for work on tight openings and recesses.

#### **Note:**

Not excessive contact pressure is what achieves a high grinding performance but rather the

correct and uniform speed.

## **5 Maintenance, cleaning and care**

#### **Caution:**

Remove the battery from device before any assembly, adjustment, maintenance measure or repair!

#### **Note:**

Every device is dirtied by dust when working with wood. Cleaning is therefore essential. To ensure a long service life, however, the machine should be cleaned with a soft cloth or brush after each use.

Mild soap or other suitable cleaning agent may be used in this context. Solvents or cleaning agents containing alcohol (e.g. petrol, cleaning alcohols etc.) should be avoided, since these can attack plastic casings.

Always keep the apertures required for cooling the motor free of dust and dirt.

#### **Service note**

**Please note:** The mains power input for the charger may only be replaced by our Proxxon Service Department or a qualified specialist!

## **6 Accessories**

For more detailed information on accessories, please request our device catalogue from the address specified on the last page in the warranty information.

#### **Please note in general:**

Proxxon bits and cutters have been designed to work with our machines, which makes them optimal for their use.

We will not assume any liability whatsoever for the safe and proper function of our devices when using third-party bits and cutters!

## 7 Disposal:

---

Please do not dispose of this machine in household waste! The device contains valuable materials which can be recycled. If you have questions concerning this topic, please contact your municipal disposal company or other appropriate municipal institutions.

### **Note on disposal within the EU:**

Please note that in accordance with the EU directive 2012/19/EU and the EU directive 2006/66/EC, defective or consumed accumulators and no longer operational electrical devices must be disposed of separately from household waste and must be sent for reuse in an environmentally responsible manner!

## 8 CE Declaration of conformity

---

Name and address of the manufacturer:  
PROXXON S.A.  
6-10, Hårebjerg  
L-6868 Wecker

Product designation: BS/A  
Article No.: 29810/29812

On our sole responsibility, we declare that this product conforms to the following directives and normative documents:

### **EU EMC Directive 2016/30/EU**

DIN EN 55014-1/09.2016  
DIN EN 55014-2/01.2016  
DIN EN 61000-3-2/03.2015  
DIN EN 61000-3-3/03.2014  
DIN EN 61000-4-2/12.2009  
DIN EN 61000-4-3/04.2011  
DIN EN 61000-4-4/04.2013  
DIN EN 61000-4-5/03.2015  
DIN EN 61000-4-6/08.2014  
DIN EN 61000-4-11/02.2005

### **EU Machinery Directive 2006/42/EC**

DIN EN 62841-1/07.2016  
DIN EN 62841-2-4/05.2015

Date: 15.02.2017

Dipl.-Ing. Jörg Wagner



PROXXON S.A.  
Appliance Safety Division

The CE document authorized agent is identical with the signatory.

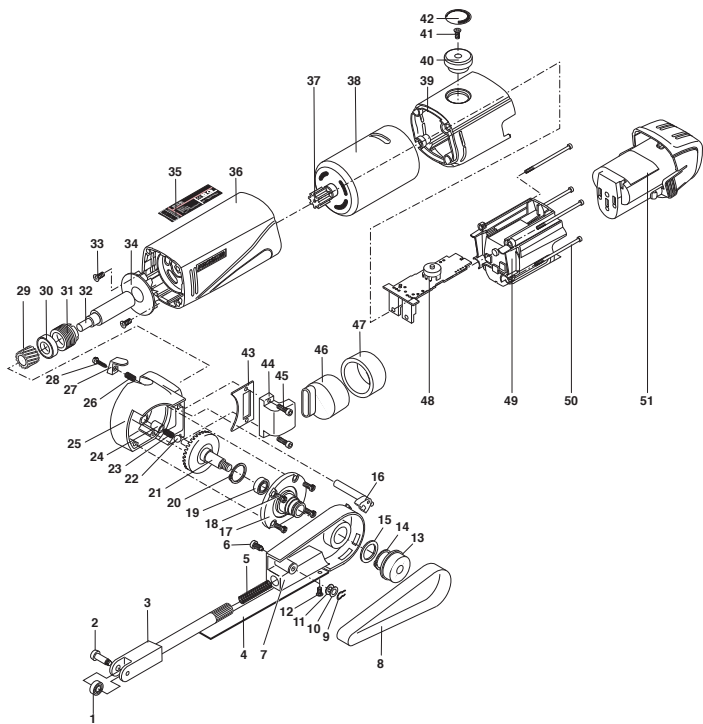


## Spare Parts List

---

### PROXXON BS/A

<b>ET - Nr.:</b>	<b>Description:</b>	<b>ET - Nr.:</b>	<b>Description:</b>
29810-01	Idler pulley	29810-45	Screw
29810-02	Pin	29810-46	Adapter 1
29810-03	Grip head	29810-47	Adapter 2
29810-04	Support for abrasive belt	29810-48	Board
29810-05	Spring	29810-49	Battery socket
29810-06	Pin	29810-50	Housing screw
29810-07	Bracket	29810-51	Battery
29810-08	Abrasive belt	29810-97	Packaging
29810-09	Retaining ring	29810-99	Manual
29810-10	Washer		
29810-11	Wave washer		
29810-12	Screw		
29810-13	Driving wheel		
29810-14	Retaining ring		
29810-15	Washer		
29810-16	Plunger pin		
29810-17	Flange		
29810-18	Screw		
29810-19	Bearing		
29810-20	Retaining ring		
29810-21	Ring gear		
29810-22	Ball		
29810-23	Spring		
29810-24	Bushing		
29810-25	Aluminum head		
29810-26	Spring		
29810-27	Knob		
29810-28	Screw		
29810-29	Pinion gear		
29810-30	Bearing		
29810-31	Ring nut		
29810-32	Shaft		
29810-33	Screw		
29810-34	Fan		
29810-35	Label		
29810-36	Housing		
29810-37	Pinion gear		
29810-38	Motor		
29810-39	Cap		
29810-40	Adjusting knob		
29810-41	Screw		
29810-42	Label		
29810-43	Plate		
29810-44	Connector		



# PROXXON

**GB Service note**

All PROXXON products are thoroughly inspected after production. Should a defect occur nevertheless, please contact the dealer from whom you purchased the product. Only the dealer is responsible for handling all legal warranty claims which refer exclusively to material and manufacturer error.

Improper use, such as capacity overload, damage due to outside influences and normal wear are excluded from the warranty.

You will find further notes regarding „Service and Spare Parts Management“ at [www.proxxon.com](http://www.proxxon.com).