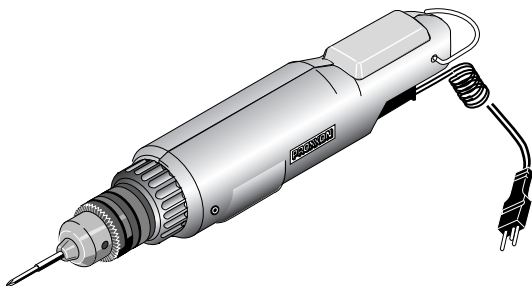


PROXXON

MIS 1



Manual

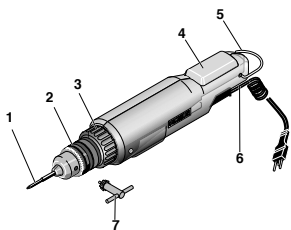


Fig. 1

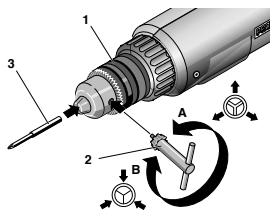


Fig. 2

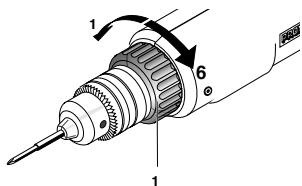


Fig. 3

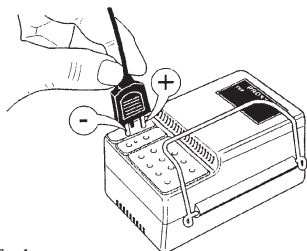


Fig. 4

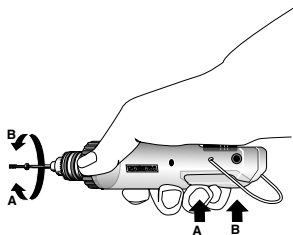


Fig. 5

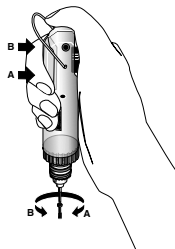


Fig. 6

Forword

Dear customer!

The PROXXON Micro screwdriver MIS 1 is a handy, but however, a powerful tool for sensitive screwing.

This manual comprises:

- safety regulations,
- operating and maintenance instructions,
- spare parts list.

Please note!

Using this manual will

- **help you** to understand the machine
- **avoid** malfunctions caused by faulty operation
- **increase** the lifetime of the machine.

Always keep this manual close at hand.

Do not operate the machine unless you are fully familiar with it. Follow the instructions.

PROXXON will not assume liability for safe functioning

- if the machine is used in a way that does not comply with the usual modes of operation,
- if it is used for purposes other than those mentioned in this manual,
- if the safety regulations are not observed.

No warranty claims can be lodged for damage resulting from

- operating errors,
- insufficient maintenance.

Please observe the safety regulations for your own safety.

Use only genuine PROXXON spare parts.

We reserve the right for technical modifications without prior notification.

We wish you much success with your new machine.

Warning!

Read all safety warnings and instructions. Failure to follow all safety warnings and instructions listed below may result in electric shock, fire and/or serious injury.



KEEP ALL SAFETY WARNINGS AND INSTRUCTIONS FOR THE FUTURE !

Legend

Fig.1

1. Tool insert
2. Toothed rim chuck
3. Torque adjustment ring
4. Tumbler switch to cw and ccw rotation
5. Machine hanger
6. Power cable
7. Drill chuck key

Description of the machine

The PROXXON Micro screwdriver MIS 1 is an ideal tool for sensitive screwing for watch makers, opticians, jewellers, precision mechanics and model makers.

The machine is equipped with:

- Toothed rim drill chuck with a clamping diameter of up to 6 mm, also for 1/4" normal bits.
- Three-step planetary gear for correct screwing speed of 150 rpm.
- Conveniently positioned tumbler switch for clockwise and counter-clockwise rotation.
- Sensitive friction clutch. Adjustable in five steps from 0.25 to 1.0 Nm. Step 6 = clutch OFF up to a torque of 2.0 Nm.

Accessories included

You will find the following screwdriver bits in your set:

- screwdriver bits for slot-head screws:
0.3 x 1.5 mm, 0.35 x 2 mm, 0.4 x 2.5 mm
- TX screwdriver bits, sizes T6, T8 and T10
- Phillips screwdriver bits, sizes 0 and 1
- Allen key bits, sizes 1.5, 2.0 and 2.5 mm
- Hexagon socket inserts:
3.0, 3.5, 4.0, 4.5 and 5.0 mm

Suitable power supplies

To supply the machine, we recommend only Proxxon power supplies (including the adjustable versions, NG2/E or NG5/E). In all cases, the power supply should have an output capacity of 1 A at 12 V.

Technical data

| | |
|--------------------|------------|
| Voltage: | 12 to 18 V |
| Power consumption: | 40 Watt |
| Speed: | 250/rmp |

| | |
|--|----------------------------|
| Gear ration | 93:1 |
| Friction clutch | 5-step, 0,25 bis 1,0 Nm |
| Torque with the friction clutch switched off (step 6) | 2 Nm |
| Weight: | 400 g |
| Noise: | ≤ 70 dB (A) |

Please do not dispose off the machine!

For your safety, always wear hearing protection while working!



Operation

Clamping, changing tools

Attention!

Disconnect the machine (from the power pack before changing tools.

Insert the drill chuck key 2 (Fig. 2) into the drill chuck (1) and turn in direction „A“ to open the chuck.

Insert the tool (3) into the drill chuck until it bottoms and turn the drill chuck key in direction „B“ to clamp the tool.

Attention!

Always clamp the tools securely.

Adjusting the torque

Turn the adjustment ring 1 (Fig. 3) to the desired torque value.

Step 1 = 0,35 Nm

Step 5 = 1,0 Nm

Step 6 = 2 Nm (clutch OFF)

Connecting the machine

Insert the plug (Fig. 4) into the socket on the power pack.

Working with the machine

Attention!

Danger of injury!

Replace worn tools in due time.

Adjust the correct torque for the werc on the adjustment ring (Fig. 3).

Note

Torques which must be strictly observed should be determined with a torque wrench.

Attach the screwdriver to the screw or nut and hold it as shown in Fig. 5 cr 6.

Operate the tumbler switch „A“ or „B“ (Fig. 5 and 6).

Press A = clockwise rotation

Press B = counter-clockwise rotation



Disposal:

Please do not dispose of the device in domestic waste! The device contains valuable substances that can be recycled. If you have any questions about this, please contact your local waste management enterprise or other corresponding municipal facilities.

EC Declaration of Conformity

Name and address:

PROXXON S.A.
6-10, Härebjerg
L-6868 Wecker

Product designation:

MIS 1

Article No.:

28690

In sole responsibility, we declare that this product conforms to the following directives and normative documents:

EU EMC Directive 2014/30/EG

DIN EN 55014-1 / 05.2012

DIN EN 55014-2 / 06.2009

DIN EN 61000-3-2 / 03.2010

DIN EN 61000-3-3 / 6 2009

EU Machinery Directive 2006/42/EG

DIN EN 62841-1/07.2016

Date: 29.09.2017

Dipl.-Ing. Jörg Wagner

PROXXON S.A.

Machine Safety Department

The CE document authorized agent is identical with the signatory.

Spare Parts List

| Art-Nr. | Description |
|-----------|----------------------------|
| 28690 -01 | Casing half, right |
| 28690 -02 | Casing half, left |
| 28690 -03 | On-off Button |
| 28690 -04 | Power-switch unit |
| 28690 -05 | Cuck (without Chuck-Key) |
| 28690 -06 | Adjustment ring for torque |
| 28690 -07 | Locking ring for torque |
| 28690 -08 | Locking ring with tappet |
| 28690 -09 | Spring |
| 28690 -10 | Shaft |
| 28690 -11 | Bush, long |
| 28690 -12 | Washer dia.14 |
| 28690 -13 | Ball |
| 28690 -14 | Gear casing |
| 28690 -15 | Screw |
| 28690 -16 | Hollow wheel |
| 28690 -17 | Flange |
| 28690 -18 | Planet gear |
| 28690 -19 | Planet carrier |
| 28690 -20 | Washer dia.9 |
| 28690 -21 | Motor |
| 28690 -22 | Bow |
| 28690 -23 | Power-supply cord |
| 28690 -24 | Casing screw |
| 28690 -25 | Pinion |
| 28690 -26 | Bush, short |
| 28690 -27 | Chuck key |
| 28690 -28 | Motor plate |
| 28690 -29 | Screw |

