

Fig. 1

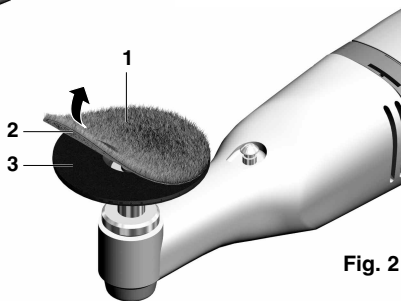


Fig. 2

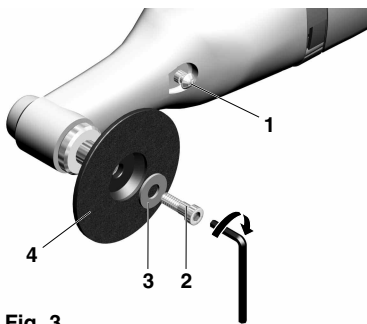


Fig. 3

**GB** **Translation of the Original  
Operating Instructions  
PROXXON WP/E Angle  
Polisher**

Dear customer!

Always keep these operating instructions and the enclosed safety guidelines within reach.

Only use this device with exact knowledge of it and comply with the instructions and safety guidelines!

This is necessary to ensure safe operation and, secondly, it facilitates familiarisation with the device and its functions.

*Proxxon assumes no liability for the safe function of the device in the case of:*

- *handling that does not comply with normal intended use,*
- *use for other purposes not mentioned in the manual,*
- *incorrectly executed repairs,*
- *failure to heed safety instructions,*
- *external effects for which the manufacturer is not responsible.*

*We recommend using PROXXON original spare parts for all repair and maintenance work.*

*Repairs should only be performed by qualified skilled personnel!*

*Please note: All information contained in these operating instructions - especially the technical data - corresponds to the status at the time of printing.*

*We reserve the right to make further developments in the interest of technical progress. We wish you every success with the device.*

**WARNING!**

Read all safety warnings and instructions. Failure to follow all safety warnings and instructions listed below may result in electric shock, fire and/or serious injury.



**KEEP ALL SAFETY WARNINGS AND INSTRUCTIONS FOR THE FUTURE !**

**Safety Warnings Common for Grinding, Sanding, Wire Brushing, Polishing or Abrasive Cutting-Off Operations:**

- a.) This power tool is intended to function as a sander or polisher.** Failure to follow instructions listed below may result in electric shock, fire and/or serious injuries.
- b.) This electric power tool is not suitable for grinding, wire brushing and cutting-off operations.** Uses for which the power tool is not intended can cause hazards and injuries.
- c.) Do not use accessories which are not designed or recommended by the manufacturer specifically for this power tool.** Just because the accessory can be attached to your power tool does not assure safe use.
- d.) The rated speed of the bits and cutters must be at least equal to the maximum speed specified on the power tool.** Accessories that turn faster than their rated speed can break and fly apart.
- e.) The outside diameter and thickness of the bits and cutters must be within the capacity rating of your power tool.** Incorrectly sized bits and cutters cannot be adequately guarded or controlled.
- f.) The arbour size of discs, flanges, grinding discs or other accessories must properly fit the grinding spindle of your power tool.** Bits and cutters that do not fit the grinding spindle of the power tool properly will turn unevenly, vibrate very strongly and cause loss of control.
- g.) Do not use damaged bits and cutters. Before each use, inspect bits and cutters such as sanding discs for chips and cracks, grinding discs for cracks, strong wear or tear, wire brushes for loose or broken wires. If the power tool or bits and cutters are dropped, check for damage or install undamaged bits and cutters. After you have inspected and installed the bits and cutters, keep yourself and any other persons in the vicinity away from the plane of the rotating bits and cutters and run the device at maximum rotational speed for one minute.** Damaged bits and cutters usually break during this test time.

- h.) **Wear protective equipment.** Depending on the application, use full face protection, eye protection or protective goggles. If appropriate, wear a dust mask, hearing protection, protective gloves or a special apron capable of stopping small abrasive and material particles. The eyes are to be protected from flying debris generated during various operations. Dust masks or respirators must filter the dust generated during the operation. If you are exposed to loud noise for a long time, you may suffer hearing loss.
- i.) **Keep other people at a safe distance away from your work area. Anyone who enters the working area must wear personal protective equipment.** Fragments of the work piece or broken bits and cutters can fly away and cause injuries even beyond the immediate area of work.
- j.) **Hold the device only by its insulated grip surfaces if you perform work where the bits and cutters could contact hidden power cables or your own mains cable.** Contact with a live cable can energize metal device parts and cause electric shock.
- k.) **Keep the mains cable away from rotating bits and cutters.** If you lose control of the device, the mains cable could be cut or snagged, and your hand or your arm could get pulled into the rotating bits and cutters.
- l.) **Never set down the power tool until the bits and cutters come to a complete stop.** Turning bits and cutters grab the depositing surface and pull the power tool out of your control.
- m.) **Do not allow the power tool to run while you are carrying it.** Your clothing could get snagged accidentally in the rotating bits and cutters, causing the power tool to pierce your body.
- n.) **Regularly clean the ventilation slits of your power tool.** The motor fan sucks dust into the housing and a strong accumulation of metal dust can cause electrical hazards.
- o.) **Do not use the power tool in the vicinity of combustible materials.** Sparks could ignite these materials.

- p.) **Do not use bits and cutters that require liquid coolants.** The use of water or other liquid coolants can cause electric shock.

### **Kickback and related warnings**

Kickback is a sudden reaction to a pinched or snagged rotating wheel, sanding band, brush or any other accessory. Pinching or snagging causes rapid stalling of the rotating accessory which in turn causes the uncontrolled power tool to be forced in the direction opposite of the accessory's rotation.

For example, if an abrasive wheel is snagged or pinched by the workpiece, the edge of the wheel that is entering into the pinch point can dig into the surface of the material causing the wheel to climb out or kick out. The wheel may either jump toward or away from the operator, depending on direction of the wheel's movement at the point of pinching. Abrasive wheels may also break under these conditions.

Kickback is the result of power tool misuse and/or incorrect operating procedures or conditions and can be avoided by taking proper precautions as given below.

- a) **Maintain a firm grip on the power tool and position your body and arm to allow you to resist kickback forces.** The operator can control kickback forces, if proper precautions are taken.
- b) **Use special care when working corners, sharp edges etc. Avoid bouncing and snagging the accessory.** Corners, sharp edges or bouncing have a tendency to snag the rotating accessory and cause loss of control or kickback.
- c) **Do not attach a toothed saw blade.** Such blades create frequent kickback and loss of control.
- d) **Always feed the bit into the material in the same direction as the cutting edge is exiting from the material (which is the same direction as the chips are thrown).** Feeding the tool in the wrong direction causes the cutting edge of the bit to climb out of the work and pull the tool in the direction of this feed.

- e) **When using rotary files, cut-off wheels, high-speed cutters or tungsten carbide cutters, always have the work securely clamped.** These wheels will grab if they become slightly canted in the groove, and can kickback. When a cut-off wheel grabs, the wheel itself usually breaks. When a rotary file, high-speed cutter or tungsten carbide cutter grabs, it may jump from the groove and you could lose control of the tool.

#### **Safety Warnings Specific for Polishing:**

- a. **Loose parts on the polishing guard, especially the fastening cords, are not permitted. Tuck away or shorten the fastening cords.** Loose, spinning fastening cords may make contact with your fingers or become caught in the workpiece.

#### **Special safety guidelines on sanding:**

- a.) **Do not use any oversized sanding disc papers, but comply with manufacturer's specifications on sanding paper size.** Sanding papers that extend beyond the grinding disc can cause injuries as well as lead to binding, tearing of the sanding discs or recoil.

For use in dry environments only



Protection class II device



Please do not dispose off the machine!



Wear safety glasses!



For your safety, always wear hearing protection while working!



#### **1 Key (Fig. 1):**

1. Gear head
2. Speed control knob
3. On/Off switch
4. Device bracket
5. Connecting cable
6. Motor housing
7. Lock button

8. Rubber backing disc
9. Polishing tool

## **2 Description of the device**

Whether in use in the automotive industry following painting, or to finish exposed metal surfaces, for restoration, cleaning, corrosion removal or producing that "finishing touch", including on plastic, wood and stone:

The WP/E angle polisher is a powerful but, nevertheless, extremely compact device for use in every application!

A robust two-stage gearbox in a solid cast aluminium gearbox casing transmits power from the carefully balanced and extremely quiet permanent magnet DC motor, thus providing enormous torque and a proper working speed for the polishing tool used.

In addition, the sensitive electronic control system enables its optimum adaptation to suit the most varied application purposes.

This means that the right speed and adequate power are always available to work with!

And, to ensure that power is applied under control and the polishing tool guided exactly, the device has a compact and ergonomic housing with an integrated soft component.

It is therefore pleasant to hold at all times and can be guided without fatigue.

Our WP/E also offers flexibility when selecting the material to be polished. With a comprehensive choice of carefully selected accessories, you can get started immediately, regardless of whether you are tackling bare metal or painted or coated surfaces! This manual will show you how to use your angle polisher to achieve the best results and all the other options it offers you!

## **3 Scope of delivery:**

- 1 x WP/E Angle Polisher
- 1 x Operating instructions and safety guidelines
- 1 x Rubber backing disc with touch fastener
- 1 x Lambskin polishing disc
- 1 x Polishing felt
- 12 x Grinding wheels (K 2000)
- 75 ml Polishing emulsion
- 1 x Microfibre cloth

#### 4 Technical data:

##### Motor:

Voltage:	230 V, 50/60 Hz, ~
Power:	100 Watt
Short-term operation:	KB 3 min

##### Device:

Length:	approx. 260 mm
Weight (incl. connecting cable):	approx. 880 gr.
Spindle velocity:	800-2500 rpm
Maximum polishing tool diameter:	50 mm
Noise development:	< 70 dB(A)

Please note that the sound and vibration measurements in particular have been performed with Proxon bits and cutters. When using third-party brands we cannot guarantee compliance with the statements given here!

#### 5 Commissioning

Your WP/E angle polisher is delivered ready for use and, except for the fitting of polishing tools to the rubber backing disc, no special commissioning measures need to be taken.

However, please check the device and the polishing tools for any visible wear before every use!





Always ensure your own safety!

Despite its compact size, the WP/E angle polisher is an electric tool that harbours a certain level of risk. Always ensure that the mains plug is disconnected when checking the device, during cleaning or when changing polishing tools!

##### 5.1 Rubber backing disc with quick-action touch fastener (Fig. 2)

Polishing tools 1 (e.g. the polishing sponge or felt disc) are fixed to the rubber backing disc 3 with the touch fastener 2. Rapid and safe changing of polishing tools therefore poses no problem when adjusting to different materials or machining stages. When changing a polishing tool, simply pull of the tool and press on the replacement!

The following polishing tools are included in the scope of delivery of the WP/E angle polisher:

1 x	Polishing sponge (blue=medium hard, Article 28662)	For applying polishing emulsion to paint and metal surfaces and subsequent polishing. With touch fastener. Ø 50 x 25 mm.	
1 x	Lambskin polishing hood (Article 28664)	Made of high-quality, thick lambskin for polishing scratchproof paints. With touch fastener. Ø 50 mm.	
1 x	Polishing felt disc, medium hard (Article 28666)	For polishing metals (e.g. stainless steel, brass and copper). With touch fastener.	
12 x	Super-fine grinding disc, 2000 grit (Article 28670)	Made of silicon carbide. For finishing of paint surfaces, removing paint drips and inclusions. With touch fastener. Ø 50 mm.	

A microfibre cloth (Article 28678) is also included with the WP/E for final cleaning of polished surfaces.

#### 6 Working with the device:

- Never work without dust protection mask and safety glasses. Some dusts have a hazardous effect! Materials containing asbestos may not be machined!
- Do not work with damaged tools!

- Ensure the work piece is fixed securely! Loose work pieces should be clamped in a suitable fixture. This prevents the work pieces from flying about.
- A correct and uniform speed achieves a high performance, not excessive contact pressure! Excessive pressure is to be avoided: it only stresses the device

and can even damage the bits and cutters!

- Hold the device without covering the ventilation slots. If it overheats, you absolutely must shut off the device and allow it to cool down.

#### **Workpiece cleaning:**

Naturally enough, it is essential that a dirty workpiece be cleaned thoroughly prior to polishing! Use of sandpaper is helpful here. Appropriate sanding sheets with a touch fastener layer are available in our range ([www.proxxon.com](http://www.proxxon.com)).

#### **Polishing:**

##### **Warning:**

Please ensure that the polishing tool is in a perfect condition and not worn or damaged. Parts can break off and fly about if polishing tools are worn or damaged. This could result in injuries.

##### **Please note:**

Never work without polishing agent! Please note that the ingredients of different polishing agents play a decisive part in achieving the polishing effect, not the mechanical action of the polishing tool!

Therefore, the choice of polishing agent, whether emulsion, wax or paste, is decisive if the desired result is to be achieved. Please ensure that the correct agent is selected for the material to be polished and the respective working stage.

A tube (75 ml) of metal polishing paste is included in the WP/E angle polisher scope of delivery. A replacement can be obtained from retailers, and these also stock further polishing agents of all types.

Application of the polishing agent is most expedient with the enclosed blue polishing sponge. This procedure should be realised at as low a speed as possible to avoid the polishing agent splashing about.

Following application of the polishing agent to the surface to be polished, the polishing process can be continued as required with the polishing felt disc and polishing hood.

The complete procedure should, depending on requirements, be repeated until the desired result is achieved. Finally, the workpiece should be cleaned of residual polishing agent using the microfibre cloth.

## **7 Accessories for the WP/E angle polisher**

---

Naturally enough, all the items described above (except metal polishing paste) are also available as accessories from Proxxon.

For more detailed information on accessories, please request our device catalogue from the address specified on the last page in the warranty information.

#### **Please note in general:**

Proxxon bits and cutters have been designed to work with our machines, which makes them optimal for their use.

We will not assume any liability whatsoever for the safe and proper function of our devices when using third-party bits and cutters!

#### **Service note**

Please note: The mains power input may only be replaced by our Proxxon Service Department or a qualified specialist!

## **8 Care and maintenance:**

---

The device is broadly maintenance-free. For a long service life, you should clean your unit after every use with a soft cloth or brush.

The exterior of the housing can be cleaned with a soft, possibly damp cloth. A mild soap or other suitable cleaning agent may be used during this. Solvents or cleaning agents containing alcohol (e.g. petrol, cleaning alcohols etc.) should be avoided, since these can attack plastic casings. In any event, make absolutely certain that no liquids penetrate into the interior of the device.

### **8.1 Replacing/Using the rubber backing disc (Fig. 3):**

#### **Warning:**

For the following steps, it is imperative that you disconnect the mains plug of the device!

#### **Caution:**

A worn or damaged rubber backing disc should be replaced immediately! Never operate your WP/E with a defective rubber backing disc or defective polishing tools! Risk of breakage and injuries!

A new rubber backing disc is available commercially under the article number 28548.

1. Press the lock button 1 carefully.
2. Using a suitable screwdriver, release and unscrew the check screw 2. Caution: The shaft may rotate as well somewhat until the lock button "finds" its correct position on the shaft in the interior of the device. This is noticeable when the lock button engages completely at that point. The shaft is then blocked.
3. Remove the rubber backing disc 4 and the disc 3.
4. Replace the rubber backing disc 4.
5. Fit the screw 2 and disc 3.
6. Tighten the screw 2 firmly.

### **9 Disposal:**

Please do not dispose of this machine in household refuse! The device contains reusable materials which can be recycled. If you have any questions about this, please contact your local disposal company or other appropriate local facilities.

### **EC Declaration of Conformity**

Name and address:

PROXXON S.A.  
6-10, Härebierg  
L-6868 Wecker

Product designation: WP/E Angle Polisher  
Article No.: 28660

On our sole responsibility, we declare that this product conforms to the following directives and normative documents:

#### **EU Machinery Directive 2006/42/EC**

DIN EN 60745-1 / 01.2010  
DIN EN 60745-2-3 / 04.2015

#### **EU EMC Directive 2014/30/EC**

DIN EN 55014-1 / 05.2012  
DIN EN 55014-2 / 02.2016  
DIN EN 61000-3-2 / 03.2015  
DIN EN 61000-3-3 / 03.2014

Date: 06.02.2018



Jörg Wagner (Dipl.-Ing.)

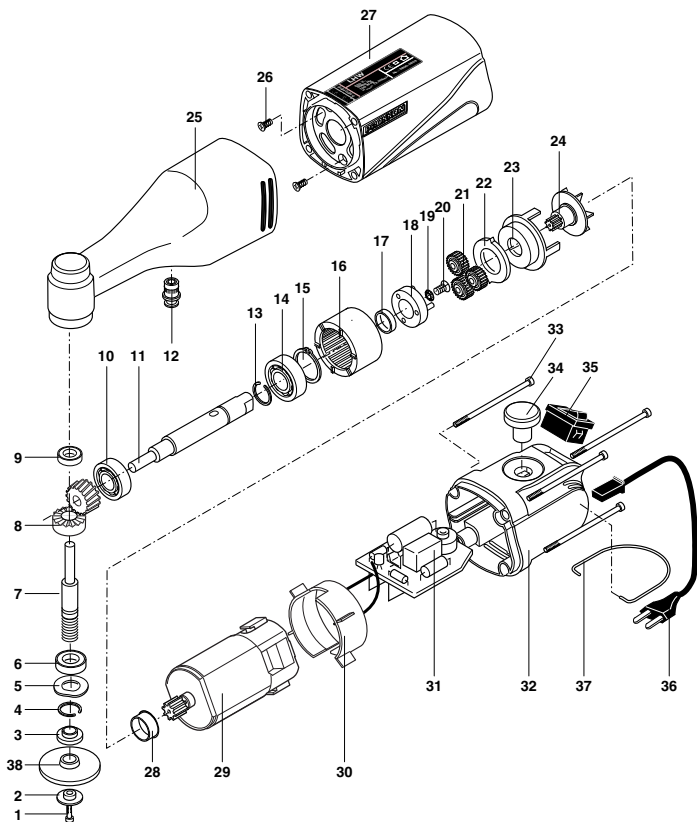
PROXXON S.A.

The person authorised to compile the technical documents is identical to the signatory

## Spare Parts List

---

ET-Nr.	Description
28660 - 01	Screw
28660 - 02	Washer
28660 - 03	Washer
28660 - 04	Circlips
28660 - 05	Corrugated washer
28660 - 06	Bearing
28660 - 07	Shaft, short
28660 - 08	Bevel Gear
28660 - 09	Bearing
28660 - 10	Bearing
28660 - 11	Shaft, long
28660 - 12	Stop
28660 - 13	Circlips
28660 - 14	Bearing
28660 - 15	Retaining ring
28660 - 16	Ring gear
28660 - 17	Bushing
28660 - 18	Planet carrier
28660 - 19	Serrated lock washer
28660 - 20	Screw
28660 - 21	Planet gear
28660 - 22	Holding disc
28660 - 23	Centering device
28660 - 24	Fan with centre gear
28660 - 25	Head incl. stop button
28660 - 26	Motor screw
28660 - 27	Motor casing
28660 - 28	Centering ring
28660 - 29	Motor incl. pignon
28660 - 30	Support ring
28660 - 31	Board
28660 - 32	Cap
28660 - 33	Casing screw
28660 - 34	Knob
28660 - 35	Switch
28660 - 36	Power supply cord incl. bending protection
28660 - 37	Bow
28660 - 38	Rubber backing disc
28660 - 97	Plastic case
28660 - 99	Manual incl. safety instructions



# PROXXON

## **GB** Service note

All PROXXON products are thoroughly inspected after production. Should a defect occur nevertheless, please contact the dealer from whom you purchased the product. Only the dealer is responsible for handling all legal warranty claims which refer exclusively to material and manufacturer error.

Improper use, such as capacity overload, damage due to outside influences and normal wear are excluded from the warranty.

You will find further notes regarding "Service and Spare Parts Management" at [www.proxxon.com](http://www.proxxon.com).