

PROXXON

PS 13

Manual

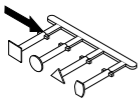


Fig. 1

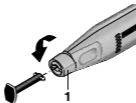


Fig. 2

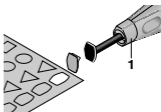
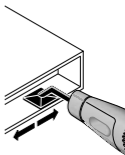
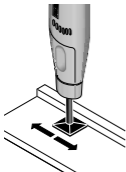
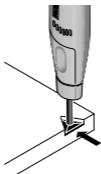
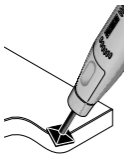


Fig. 3

Anwendungen für Ihr PS 13:



GB PROXXON PS 13

Dear Customer,

Before putting the machine into operation, read the enclosed safety rules and operating instructions.

General Safety Rules

Warning!

Read all instructions. Failure to follow all instructions listed below may result in electric shock, fire and/or serious injury. The term „power tool“ in all of the warnings listed below refers to your mains operated (corded) power tool or battery operated (cordless) power tool, also machines and electric units. Only use the power tool for the purpose for which it was intended, with the due attention to the general safety and accident prevention regulations.

SAVE THESE INSTRUCTIONS.

1.) Work area

- a) **Keep work area clean, tidy and well lit.**
Cluttered and dark areas invite accidents.
- b) **Do not operate power tools in explosive atmospheres, such as in the presence of flammable liquids, gases or dust.** Power tools create sparks which may ignite the dust or fumes.
- c) **Keep children and bystanders away while operating a power tool.**
Distractions can cause you to lose control.

2.) Electrical safety

- a) **Power tool plugs must match the outlet. Never modify the plug in any way. Do not use any adapter plugs with earthed (grounded) power tools.**
Unmodified plugs and matching outlets will reduce risk of electric shock.
- b) **Avoid body contact with earthed or grounded surface such as pipes, radiators, ranges and refrigerators.**
There is an increased risk of electric shock if your body is earthed or grounded.
- c) **Do not expose power tools to rain or wet conditions.**
Water entering a power tool will increase the risk of electric shock.
- d) **Do not abuse the cord. Never use the cord for carrying, pulling or unplugging the power tool. Keep cord away from heat, oil,**

sharp edges or moving parts.

Damaged or entangled cords increase the risk of electric shock.

- e) **When operating a power tool outdoors, use an extension cord suitable for outdoor use.**

Use of a cord suitable for outdoor use reduces the risk of electric shock.

3.) Personal safety

- a) **Stay alert, watch what you are doing and use common sense when operating a power tool. Do not use a power tool while you are tired or under the influence of drugs, alcohol or medication.**

A moment of inattention while operating power tools may result in serious personal injury.

- b) **Use safety equipment. Always wear eye protection.**

Safety equipment such as dust mask, non-skid safety shoes, hard hat, or hearing protection used for appropriate conditions will reduce the risk of personal injuries.

- c) **Avoid accidental starting. Ensure the switch is in the off position before plugging in.**

Carrying power tools with your finger on the switch or plugging in power tools that have the switch on invites accidents. Never bridge the switch.

- d) **Remove any adjusting key or wrench before turning the power tool on.**

A wrench or a key left attached to a rotating part of the power tool may result in personal injury. Always keep your hands away from moving (rotating) parts.

- e) **Do not overreach. Keep proper footing and balance at all times.**

This enables better control of the power tool in unexpected situations.

- f) **Dress properly. Do not wear loose clothing or jewellery. Keep your hair, clothing and gloves away from moving parts.**

Loose clothes, jewellery or long hair can be caught in moving parts.

- g) **If devices are provided for the connection of dust extraction and collection facilities, ensure these are connected and properly used.**

Use of these devices can reduce dust related hazards.

- h) **Only allow trained personnel to use the power tool.**
Apprentices may only operate the power tool when they are aged over 16, when this is necessary for their training and when they are supervised by a trained operative.

4.) Power tool use and care

- a) **Do not force the power tool. Use the correct power tool for your application.**

The correct power tool will do the job better and safer at the rate for which it was designed.

- b) **Do not use the power tool if the switch does not turn it on and off correctly.**

Any power tool that cannot be controlled with the switch is dangerous and must be repaired.

- c) **Disconnect the plug from the power source before making any adjustments, changing accessories, or storing power tools.**

Such preventive safety measures reduce the risk of starting the power tool accidentally.

- d) **Store idle power tools out of the reach of children and do not allow persons unfamiliar with the power tool or these instructions to operate the power tool.**

Power tools are dangerous in the hands of untrained users.

- e) **Maintain power tools carefully. Check for misalignment or binding of moving parts, breakage or damage of parts and any other condition that may affect the power tools operation. If damaged, have the power tool repaired by a qualified expert before use.**

Many accidents are caused by poorly maintained power tools.

- f) **Keep cutting tools sharp and clean.**

Properly maintained cutting tools with sharp cutting edges are less likely to bind and are easier to control.

- g) **Secure the workpiece.**

Use clamps or a vice to hold the workpiece. This is safer than holding it with your hand, and also it frees both hands to operate the equipment.

- h) **Use the power tool, accessories and tool bits etc., in accordance with these instructions and in the manner specified for the particular type of power tool, taking into account the working conditions and the work to be performed.**

Use of the power tool for operations different from those intended could result in a hazardous situation. All unauthorized modifications to the power tool are prohibited for safety reasons.

5.) Service

- a) **Have your power tool serviced by a qualified repair person using only identical replacement parts.**

This will ensure that the safety of the power tool is maintained.

- b) **Comply with maintenance instructions and instructions on tool replacements.**

- c) **Check mains lead of power tool regularly and have it replaced by a qualified expert in case of damage.**

Description of the device

General:

The super fine grinding device with linear grinding surface is ideal for machining surfaces in recesses, slits, compartments, small corners. In a nutshell: Everywhere where it is extremely tight.

The device has four grinding inserts (straight and angled) with variously formed surfaces. In addition to suitable, self-adhesive sandpaper (watertight, grain 180, grain 240 and grain 400). 5 x 4 different forms are prestamped on each sheet.

Technical data:

Voltage 12-18 volts DC

Power approx. 10 Watt

No. of strokes 8,000/min.

Noise development = 70 dB (A).

Feed (spiral cable) with connector safeguarded against reverse polarity, approx. 100 cm long.

Note:

For operation, DC current of 12 – 18 volts at a minimum of 1 A is required.

We recommend the PROXXON power supply units NG 2 (S/E) or NG 5/E.

Working with the device:

Mounting the grinding inserts

Separate the grinding inserts at the breaking point (arrow) from the carrying material (fig. 1).

Turn the clamping mechanism of the device 1 (fig. 2) to the left by 90° up to the limit stop and push in the insert.

Then turn the clamping mechanism (1) 90° to the right again. The insert is now locked.

Attach suitable sandpaper (self-adhesive), as shown in fig. 3.

Switch on the device switch and hold the pen grinder like a ballpoint pen. The grinding movement (the stroke) goes from top to bottom and vice versa.

Simply remove and replace worn sandpaper.

Applications for your PS 13:

Some typical applications for the PS 13 are shown in the figures on the fold-out page.

Important:

It is best to work with slight contact pressure, so that the grind insert can vibrate slightly. This makes the device as efficient as possible.

Care and maintenance

Apart from occasional cleaning, the device requires no special maintenance. If you observe the instructions in these operating instructions, the device will provide you with reliable, safe and long-lasting quality service.

We reserve the right to make changes in keeping with technical progress.

Disposal:

Please do not dispose of the device in domestic waste! The device contains valuable substances that can be recycled. If you have any questions about this, please contact your local waste management enterprise or other corresponding municipal facilities.

Warranty provisions

All PROXXON products are thoroughly inspected after production. Should a defect occur nevertheless, please contact the dealer from whom you purchased the product. Only the dealer is responsible for handling all legal warranty claims which refer exclusively to material and manufacturer error.

Improper use, such as capacity overload, damage due to outside influences and normal wear are excluded from the warranty.

You will find further notes for each country regarding "Service and Spare Parts Management" at www.proxxon.com.

EC declaration of conformity

Name and address of the manufacturer:

PROXXON S.A.
6-10, Häreberg
L-6868 Wecker

Product designation: PS 13
Article No.: 28594

In sole responsibility, we declare that this product conforms to the following directives and normative documents:

EU EMC Directive 2014/30/EU

DIN EN 55014-1 / 05.2012
DIN EN 55014-2 / 06.2009
DIN EN 61000-3-2 / 03.2010
DIN EN 61000-3-3 / 06.2009

EU Machinery Directive 2006/42/EC

DIN EN 60745-1 / 01.2010
DIN EN 60745-2-4 / 11.2012

Date: 12.09.2017



Dipl.-Ing. Jörg Wagner

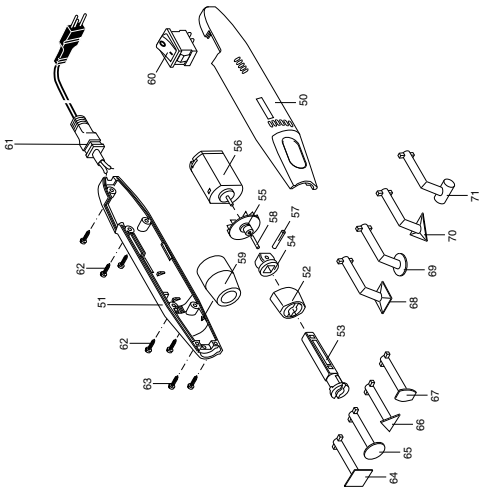
PROXXON S.A.
Machine Safety Department

The CE document authorized agent is identical with the signatory.

Spare Parts List

PROXXON PS 13
Art-No. 28594

ET - N r.:	Description
28594 - 50	Casing half, left
28594 - 51	Casing half, right
28594 - 52	Collet
28594 - 53	Tool fitting
28594 - 54	Joint
28594 - 55	Fan
28594 - 56	Motor
28594 - 57	Pin
28594 - 58	Pin
28594 - 59	Bushing
28594 - 60	Switch
28594 - 61	Cord
28594 - 62	Screw
28594 - 63	Screw
28594 - 64	Grinding inserts, square
28594 - 65	Grinding inserts, round
28594 - 66	Grinding inserts, square
28594 - 67	Grinding inserts, triangular
28594 - 68	Angled grinding inserts, square
28594 - 69	Angled grinding inserts, round
28594 - 70	Angled grinding inserts, square
28594 - 71	Angled grinding inserts, triangular



PROXXON

GB Service note

All PROXXON products are thoroughly inspected after production. Should a defect occur nevertheless, please contact the dealer from whom you purchased the product. Only the dealer is responsible for handling all legal warranty claims which refer exclusively to material and manufacturer error.

Improper use, such as capacity overload, damage due to outside influences and normal wear are excluded from the warranty.

You will find further notes regarding "Service and Spare Parts Management" at www.proxxon.com.