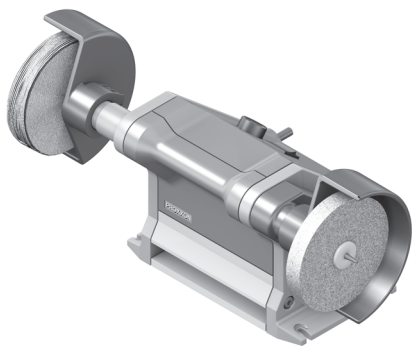
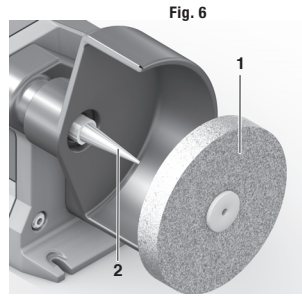
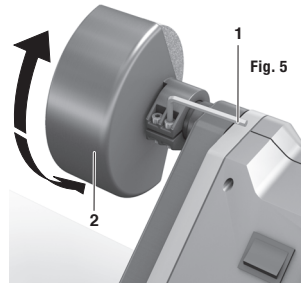
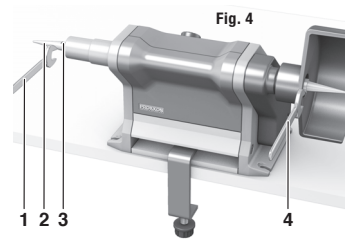
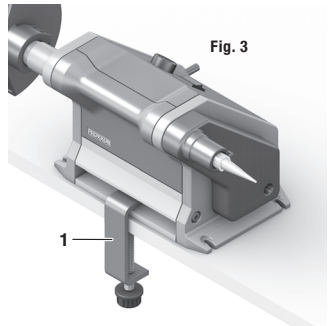
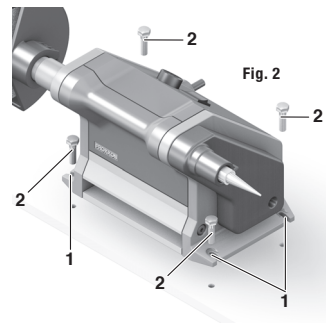
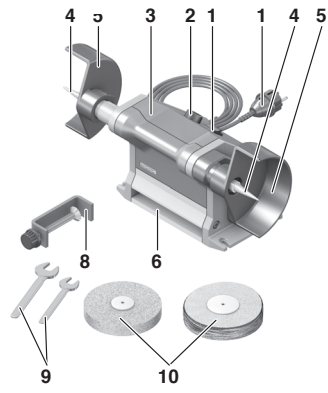


# PROXXON

## PM 100



## Manual





## Original Operating Instructions for the Proxxon PM 100 polishing machine

Dear customer!

Always keep these operating instructions and the enclosed safety guidelines within reach. Only use this device with exact knowledge of it and comply with the instructions and safety guidelines!

This is necessary to ensure safe operation and, secondly, it facilitates familiarisation with the device and its functions.

*Proxxon assumes no liability for the safe function of the device in the case of:*

- handling that does not comply with normal intended use,
- use for other purposes not mentioned in the manual,
- incorrectly executed repairs,
- failure to heed safety instructions,
- external influences for which the manufacturer is not responsible.

*We recommend using PROXXON original spare parts for all repair and maintenance work. Repairs should only be performed by qualified skilled personnel!*

*Please note: All information contained in these operating instructions - especially the technical data - corresponds to the status at the time of printing.*

*We reserve the right to make further developments in the interest of technical progress. We wish you every success with the device.*

### Warning:

**Read through all safety guidelines and instructions.** Failure to adhere to safety guidelines and instructions can result in electrical shock, fire and/or serious injuries.

## 1 Key (Fig. 1):

1. ON/OFF switch
2. Speed control knob
3. Housing
4. Polishing arbor
5. Protective cover
6. Device foot with clamping groove
7. Power supply
8. Screw clamp
9. Open-ended spanner
10. Polishing buff

## 2 Description of the device:

A stable chassis made of pressed and continuous cast aluminium parts forms a solid mechanical base for seating the drive components and the ball-bearings for the precisely-mounted main shaft.

The drive is implemented by a heavy-duty, extremely smooth-running and high-torque permanent magnet motor which transfers its force through a smooth-running belt drive onto the main shaft. A slight transmission reduction guarantees a forceful torque for the various working tasks and super-smooth, quiet running. The finally-tuned speed regulation allows setting of the optimum working speed between 1000 and 3100 rpm.

Furthermore, the structural design of the belt drive allows the motor to be located so that the housing in the area around the main shaft can be kept extremely narrow. This guarantees the highest possible flexibility even when working with differently shaped, i.e. very long workpieces.

The controls are sensibly and ergonomically located: easy to operate but not within the workspace, and also protected from soiling.

The right-hand polishing arbor can be screwed off so that a range of different accessories can be used.

An extensive range of polishing agents rounds off the facilities offered by your PM 100 polishing machine: no working task remains unfinished, no material unworked. We do hope you have considerable enjoyment with the device regardless of whether you are using it for post-painting work, final finishing to bright metal surfaces, cleaning, de-rusting or producing the "finishing touch" on material also including plastic, wood or stone.

## 3 Scope of delivery:

- 1 x PM 100 polishing machine
- 1 x Operating instructions and safety guidelines
- 1 x Screw clamp
- 1 x Fabric polishing buff, soft
- 1 x Fabric polishing buff, stiff
- 1 x Polishing bar
- 2 x Open-ended spanner

## 4 Technical data:

**Motor:**  
Voltage: 220 - 240 V, 50/60 Hz, ~  
Power: 140 Watt

**Device:**  
Length: approx. 360 mm  
Depth: approx. 220 mm  
Height: approx. 250 mm  
Polishing tool distance: approx. 360 mm

Weight (incl. connecting cable): approx. 4200 gr.  
Spindle velocity: 1000-3100 rpm  
Maximum polishing disc diameter: 4" or 102 mm  
Noise development: < 70 dB(A)

Use only in dry rooms

Protection class II device

Please do not dispose of this electrical machine in household refuse!

For your safety, always wear hearing protection while working!



## 5 Commissioning:

### 5.1 Setting up your polishing machine:

#### Always ensure your own safety!

There is always a certain hazard potential with electric tools. We have, of course, minimised this as far as possible in the construction. Despite this, you should always ensure that the mains plug is disconnected when checking the device, during cleaning or when changing polishing tools and observe the safety information!

#### Note:

When setting up the machine, make sure that the ground below it is level and secure! A secure stand is indispensable for working with the machine!

#### Note:

When setting up and fixing the machine, always disconnect the mains plug to prevent the main shaft being started up accidentally. Risk of injury!

#### Please note:

We unconditionally recommend that the polishing machine is firmly fixed to a solid base in order to operate it. There are two methods of doing this:

### 5.1.1 Bolting (Fig. 2):

In the device foot there are 4 recesses Pos. 1 provided for accepting M4 bolts.

We recommend that the holes are drilled and provided with a thread if possible. Then, as shown in Fig. 2, screw two bolts Pos. 2 into the right-hand holes, push the polishing machine with the recesses provided up to these, then screw in the two left-hand bolts and then tighten all four.



### 5.1.2 Clamping (Fig. 3):

With the help of the screw clamp included in delivery, the device can also be fixed down as shown in Fig. 3.

### 5.2 Screwing in or unscrewing the polishing arbor (Fig. 4):

The polishing arbor is used to mount the polishing tools.

#### **Please note:**

Only the right-hand polishing arbor can be unscrewed! This enables the use of further accessories!

As supplied, the right-hand polishing arbor is already pre-mounted. Please use the opened spanner supplied (Pos. 1, Fig. 4) for dismantling.

1. Use the smaller of the two open-ended spanners to hold the main shaft (Pos. 2) by pushing it along to the flat area Pos. 3.
2. Push the larger spanner Pos. 4 analogously onto the flat area of the right-hand polishing arbor Pos. 5, and unscrew the polishing arbor.
3. Proceed in reverse order for screwing in.

### 5.3 Adjusting the protective covers (Fig. 5):

The two protective covers are adjustable so that they can be adapted to the various working tasks.

#### **Note:**

You should always work with the protective covers fixed in place if possible! This is not only for your safety, but also protects against soiling!

1. Undo hexagon socket screws Pos. 1 with a hex 3 Allen key.
2. Rotate protective cover Pos. 2 into the required position.
3. Tighten hexagon socket screws Pos. 1.

### 5.4 Pushing on and removing the polishing tools (Fig. 6):

#### **Note:**

Check the device and the polishing tools for any visible wear before every use!

1. Push polishing tool Pos. 1 onto one of the polishing arbors Pos. 2, and press it into place. The polishing arbors are provided with a thread: This means that the polishing tools tighten themselves when working.
2. To remove the polishing tool, simply pull it off.

## 6 Working with the device:

#### **Caution:**

**For your own safety, wear protective goggles when you work with the device!**

#### **Warning:**

**Please ensure that the polishing tool is in a perfect condition and not worn or damaged. Parts can break off and fly about if polishing tools are worn or damaged. This could result in injuries.**

#### **Please note:**

Never work without polishing agents! Please note that the ingredients of different polishing agents play a decisive part in achieving the polishing effect, not the mechanical action of the polishing tool!

Therefore, the choice of polishing agent, whether emulsion, wax or paste, is decisive if the desired result is to be achieved. Please ensure that the correct agent is selected for the material to be polished and the respective working stage.

The universal polishing paste included in delivery in bar form is suitable for high-gloss polishing of metals and plastics and also for freshening up tarnished aluminium, copper or brass.

To make sure that the polishing tool can absorb the polishing paste, simply press the bar against it for a moment while the device is running. Polishing of the workpiece can now begin. Polishing paste must be added from time to time.

## 7 Accessories for the PM 100 polishing machine:

The following polishing tools are available as accessories for your PM 100 polishing machine:

<b>Fabric polishing buff, stiff (100 x 15 mm),</b> (article 28000)	Impregnated and particularly stiff. For pre-polishing and gloss polishing of gold, silver, platinum, copper, brass, stainless steel and plastic. With drill hole for one polishing arbor. Use only with polishing paste or polishing emulsion.
<b>Fabric polishing buff, soft (100 x 15 mm),</b> (article 28002)	For pre-polishing and gloss polishing of gold, silver, platinum, copper, brass, stainless steel and plastic. Adapts itself to the workpiece contour and is especially suitable for polishing curves and radii. With drill hole for one polishing arbor. Use only with polishing paste or polishing emulsion.
<b>Felt polishing wheel (100 x 15 mm),</b> (article 28004)	White polishing felt for high-gloss polishing of smooth surfaces on metals (e.g. gold, silver, brass and aluminium). Dimensionally stable with long service life. Very suitable for uniform polishing results. With drill hole for one polishing arbor. For all polishing pastes.
<b>Microfibre polishing buff, 15-layer (100 mm)</b> (article 28006)	Very soft. For gloss polishing of precious and non-precious metals in addition to plastic. Especially suitable for tight curves, radii and difficult-to-access locations which cannot be reached using solid discs. 15-layer microfibre cloths with drill hole for one polishing arbor. Use only with polishing paste or polishing emulsion.
<b>Universal polishing paste (80 g) manufactured from polishing agents and wax</b> (article 28008)	For the polishing tools described above. Especially suitable for polishing and high-gloss polishing of precious and non-precious metals in addition to plastic. Also for freshening up tarnished aluminium, copper or brass.

## 8 Care and maintenance:

---

The device is broadly maintenance-free. For a long service life, you should clean your unit after every use with a soft cloth or brush.

The outside of the housing can then be cleaned with a soft cloth, dampened if necessary. It is possible to use mild soap or another suitable cleaning agent. Solvents or cleaning agents containing alcohol (e.g. petrol, cleaning alcohols, etc.) should be avoided, since these can attack plastic casings. In any event, make absolutely certain that no liquids penetrate into the interior of the device.

## 9 Disposal:

---

Please do not dispose of this machine in household refuse! The device contains reusable materials which can be recycled. If you have any questions in this respect, please contact your local disposal company or other relevant municipal facilities.

## 10 EC Declaration of Conformity

Name and address:  
PROXXON S.A.  
6-10, Härebierg  
L-6868 Wecker

Product designation: Polishing machine  
PM 100

Article No.: 27180

In sole responsibility, we declare that this product conforms to the following directives and normative documents:

### EU EMC Directive 2004/108/EC

DIN EN 55014-1 / 05.2012

DIN EN 55014-2 / 11.2014

DIN EN 61000-3-2 / 04.2013

DIN EN 61000-3-3 / 03.2014

### EU Machinery Directive 2006/42/EC

DIN EN 61029-1 / 01.2010

Date: 19.11.2014



Jörg Wagner (Dipl.-Ing.)  
PROXXON S.A.  
Machine Safety Department

The CE document authorized agent is identical with the signatory.

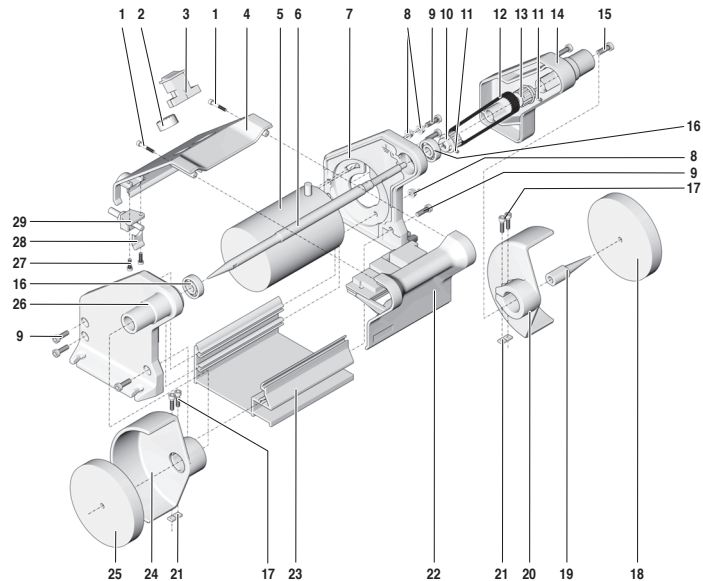
## Notizen

---

## Spare Parts List

### PROXXON PM 100

ET - Nr.:	Description
27180-01	Screw
27180-02	Knob
27180-03	Switch
27180-04	Casing part, Rear
27180-05	Motor
27180-06	Shaft
27180-07	Side part, right
27180-08	Nut
27180-09	Screw
27180-10	Pulley
27180-11	Set screw
27180-12	Drive belt
27180-13	Pulley
27180-14	Belt cover
27180-15	Screw
27180-16	Roller bearing
27180-17	Screw
27180-18	Polishing wheel
27180-19	Polishing arbor
27180-20	Protective cover
27180-21	Square nut
27180-22	Casing part, front
27180-23	Base
27180-24	Protective cover
27180-25	Polishing wheel
27180-26	Side part, left
27180-27	Screw
27180-28	Plate
27180-29	Strain-relief



# PROXXON

**GB** **Service note**

All PROXXON products are thoroughly inspected after production. Should a defect occur nevertheless, please contact the dealer from whom you purchased the product. Only the dealer is responsible for handling all legal warranty claims which refer exclusively to material and manufacturer error.

Improper use, such as capacity overload, damage due to outside influences and normal wear are excluded from the warranty.

You will find further notes regarding „Service and Spare Parts Management“ at [www.proxxon.com](http://www.proxxon.com).