

# PROXXON

TG 125/E

Manual



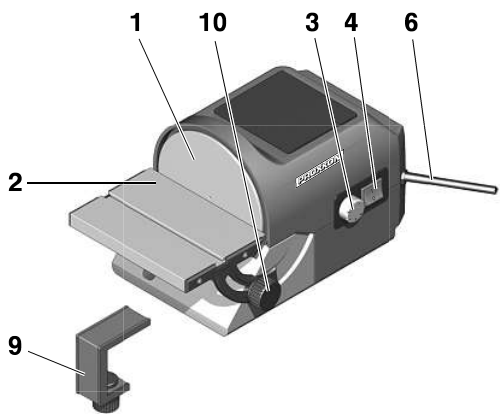


Fig. 1

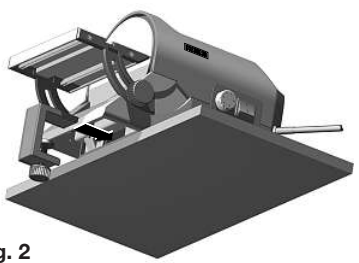
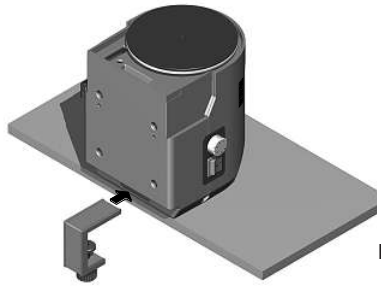
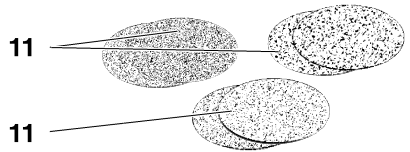


Fig. 2

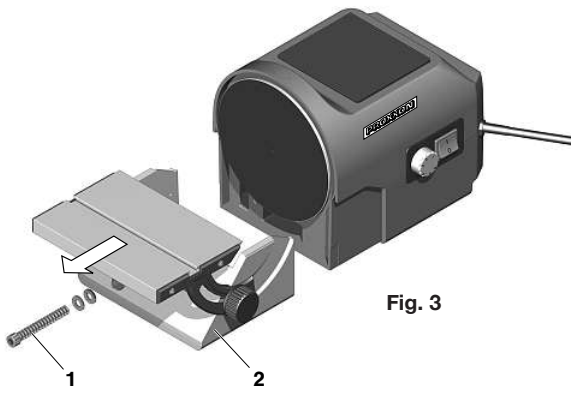
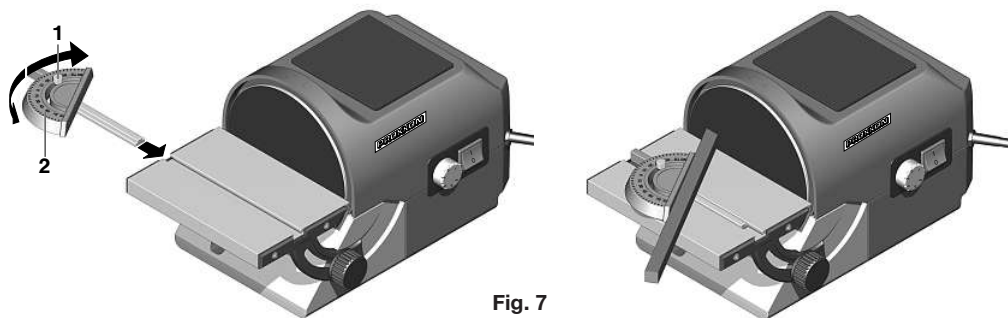
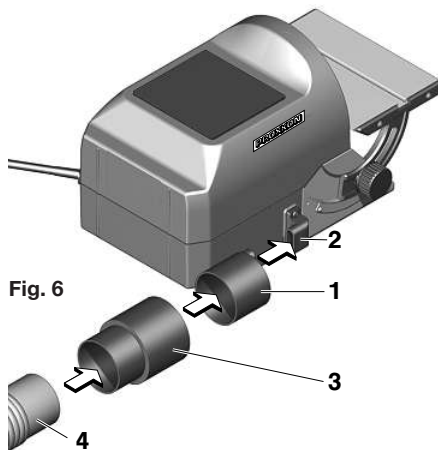
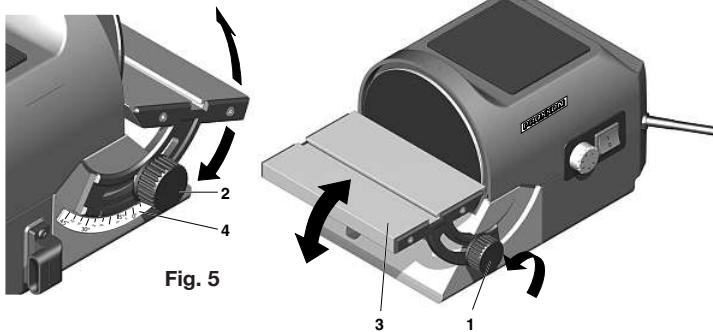


Fig. 3



Fig. 4



# Translation of the Original Operating Instructions TG 125/E disc grinding machine

Contents:

1	General view (fig. 1)	11
2	Description of the machine	12
3	Scope of delivery	12
4	Technical data	12
5	Before work	12
5.1	Setting up your disc grinding machine (fig. 2):	12
5.2	Removing and inserting the grinding table (fig.3):	13
5.3	Affixing and replacing grinding wheels (fig. 4):	13
5.4	Adjusting the grinding table angle (fig. 5):	13
5.5	Connecting the dust exhaust (fig. 6):	14
6	Working with the TG 125/E disc grinding machine	14
6.1	Working with the angle stop (fig. 7):	14
6.2	Notes on grinding speed	14
7	Care and maintenance	15
8	Disposal	15
9	CE conformity declaration	15

Dear customer!

Using these instructions

- makes it easier to get familiar with the device
- prevents malfunctions caused by improper handling, and
- lengthens the service life of your device.

Please keep these instructions readily accessible at all times.

Use the device only when you have understood it exactly and always adhere to the instructions.

PROXXON is not liable for the safe functioning of the device in cases of:

- handling that does not conform to the usual usage,
- purposes of use not designated in the instructions,
- disregard of the safety instructions.

You are not entitled to guarantee claims in cases of:

- operator errors,
- inadequate maintenance.

For your own safety, please follow the safety instructions exactly.

Use only genuine PROXXON replacement parts. We reserve the right to make improvements in the sense of technical progress. We wish you much success with the device.

## WARNING!

**Read all safety warnings and instructions.** Failure to follow all safety warnings and instructions listed below may result in electric shock, fire and/or serious injury.

**KEEP ALL SAFETY WARNINGS AND INSTRUCTIONS FOR THE FUTURE!**

**Do not use damaged bits and cutters. Before each use, inspect bits and cutters such as sanding discs for chips and cracks, grinding discs for cracks, strong wear or tear. After you have inspected and installed the bits and cutters, keep yourself and any other persons in the vicinity away from the plane of the rotating bits and cutters and run the device at maximum rotational speed for one minute. Damaged bits and cutters usually break during this test time.**



## 1 General view (fig. 1)

1. Grinding disc
2. Swivel-mounted grinding table
3. Rotary knob for speed control
4. On-off switch
5. Angle stop
6. Mains cable
7. Connecting piece
8. Guide slot for angle stop
9. Clamp
10. Locking button for angle adjustment
11. Grinding discs
13. Rubber connector

## 2 Description of the machine

---

Thank you for purchasing the TG 125/E disc grinding machine. You now own a high-precision machine to use in grinding work for which complete accuracy is required.

A high-precision manufactured and carefully balanced grinding disc with double ball-bearing direct drive guarantees excellent smoothness, precision concentricity and minimum wear.

In this way, soft and hard woods, plates, non-ferrous metal or steel, even plastic, cork, rubber and many further materials can be processed with high precision at grinding speeds of approx. 250-800 m/min (adjustable).

The various fixing possibilities ensure particular flexibility: Your TG 125/E can be operated both in "normal position" and in standing, with the grinding table removed. To this end, it is fixed with the enclosed clamp.

The grinding table is made of high-grade aluminium and can be adjusted upwards by 10° and downwards by 50°. This also includes the guide slot for the angle stop that is also included in the scope of delivery.

Two grinding wheels in each of the grain sizes offered of 80, 150 and 240 are included in the scope of delivery.

In order that the swarf goes directly where it should, namely into the vacuum cleaner, there is a connecting piece to which the vacuum cleaner can be connected. So you are optimally equipped for the grinding work.

## 3 Scope of delivery

---

- 1 x TG 125/E disc grinding machine
- 1 x Angle stop
- 1 x Connecting piece
- 1 x Rubber connector
- 2 x Grinding wheels grain 80
- 2 x Grinding wheels grain 150
- 2 x Grinding wheels grain 240
- 1 x Operating instructions
- 1 x Brochure with safety instructions
- 1 x Vice

## 4 Technical data

---

Dimensions and weights:

Length:	approx. 300 mm
Width:	approx. 140 mm
Height:	approx. 160 mm
Weight:	approx. 3 kg
Ø Grinding disc:	125 mm
Dimensions grinding table:	98 x 140 mm

Motor:

Voltage:	230 volt, 50/60 Hz
----------	-----------------------

Power input:	140 watt KB 15 min
--------------	-----------------------

Speed:	max. 3600 rpm
--------	---------------

Grinding speed:	approx. 250-800 rpm
-----------------	---------------------

Noise development:	< 55 dB(A)
--------------------	------------

Vibration:	≤ 2,5 m/s <sup>2</sup>
------------	------------------------

Only in dry rooms



Please do not dispose of this electrical machine in the household refuse!



Wear safety glasses!



## 5 Before work

---

### 5.1 Setting up your disc grinding machine (fig. 2):

*Note:*

*When setting up the machine, make sure that the ground below it is level and secure! A secure stand is indispensable for working with the machine!*

*Note:*

*When setting up and fixing the machine, always disconnect the mains plug to prevent the disc being started up accidentally. Risk of injury!*

#### **Caution:**

During all adjusting and assembly work, such as when adjusting the angle stop or when attaching or removing the grinding table, disconnect the mains plug to prevent the device from starting up unintentionally!

The disc grinding machine can be operated in two different positions: Once in the normal horizontal position or standing vertically (for sharpening tools and blades for example). In both positions, the machine should be securely clamped with the enclosed vice, as shown in fig. 2.

## 5.2 Removing and inserting the grinding table (fig.3):

### **Caution:**

*Before removing and inserting the grinding table, always disconnect the mains plug to prevent the disc being started up accidentally. Risk of injury!*

Normally, your TG 125/E is operated with the attached grinding table (as in delivery condition). Additionally, there is also the possibility, where required, of removing the grinding table, if this is necessary for certain tasks or for changing the grinding wheels.

### **Caution:**

Please note that when working particularly in the operating mode without the grinding table, always make sure to control the work piece by holding it firmly and securely in order to prevent it from being flung about.

Use the machine in the horizontal position with attached grinding table, if possible!

1. Remove Allen head screw 1
2. Remove the grinding table with grinding table holder 2 by pulling out from the front
3. To insert, simply push into the normal position
4. Turn in Allen head screw 1 again

### **Caution:**

If the grinding disc is blocked due to a work piece that is jammed between the grinding disc and the grinding table, immediately shut off the device using the On/Off switch and disconnect the mains plug. Only put the device back into operation after the jammed work piece has been removed!

## 5.3 Affixing and replacing grinding wheels (fig. 4):

### *Note:*

*Before affixing or replacing the grinding wheels, always disconnect the mains plug to prevent the disc being started up accidentally. Risk of injury!*

Two grinding wheels in each of the grain sizes 80, 150 and 240 are supplied as initial equipment with your disc grinding machine; these can also be easily obtained as spare parts. It is therefore no problem to change wheels, whether because of wear or because discs with various grain sizes are required when working.

### **Caution:**

When replacing the wheels, it is advisable to remove the grinding table as described in the previous section!

1. Remove the rear protective foil above the adhesive surface from the desired wheel,
2. Push the wheel evenly and bubble-free onto the grinding disc.
3. To replace, simply remove the grinding wheel again and push on the new wheel.

## 5.4 Adjusting the grinding table angle (fig. 5):

### **Caution:**

Before adjusting the grinding table, always disconnect the mains plug to prevent the disc being started up accidentally. Risk of injury!

1. Loosen rotary knob 1 At the same hold rotary knob 2
2. Swing grinding table 3 into the desired angle position and check the set value on angle scale 4.
3. Tighten rotary knob 1. At the same hold rotary knob 2

## 5.5 Connecting the dust exhaust

(fig. 6):

### **Caution:**

Before connecting the dust exhaust, always disconnect the mains plug to prevent the disc being started up accidentally. Risk of injury!

It is recommended to always work with the dust exhaust! This not only guarantees clean working, it also reduces the hazardous effect of some dusts!

1. Push adapter piece 1 onto connecting piece 2 of the machine
2. Push rubber adapter 3 onto adapter piece 1
3. Insert vacuum cleaner nozzle 4 into rubber adapter 3
4. Switch on vacuum cleaner when working

Another small tip:

When using the Proxxon CW-matic vacuum cleaner, manual switching on and off is no longer necessary. The CW-matic is fitted with an automatic control device; it automatically switches on and off when the power tool is switched on and off. The same effect can be obtained with traditional vacuum cleaners by using our vacuum control device.

## 6 Working with the TG 125/E disc grinding machine

---

### **Caution:**

Please note that the grinding disc turns to the left! If you use the left side when working with the attached grinding table, the work piece can be guided easily and securely, thus effectively preventing it from being hurled away!

### **Caution:**

When grinding metallic work pieces, such as when grinding knife blades for example, or when grinding stone or ceramics the material to be ground can become very hot! Do not hold the material to be ground near the grinding surface in order to avoid burns!

### **Caution:**

Wear suitable gloves to avoid abrasions especially when working with coarse sandpaper and when processing smaller work pieces!

1. If mitres are to be ground, adjust the grinding angle as described above
2. Insert the mains plug
3. Switch on the machine at On-Off-Switch
4. Set the required speed on the speed control button (pos. 3, fig. 1)

Please adjust the size of the work piece to the size of the machine! A work piece that is too large and too heavy can overburden the drive or the construction of the machine and cause damage or injuries!

## 6.1 Working with the angle stop (fig. 7):

If, for example, the ends of somewhat thinner strips are ground for mitre, it is advantageous to use the angle stop included in the scope of delivery.

1. Loosen knurled screw 1
2. Set the desired angle on scale 2
3. Turn the knurled screw tightly and insert into the intended table groove
4. Guide the desired workpiece up to the stop against the grinding wheel as shown in the illustration

## 6.2 Notes on grinding speed

The grinding speed of your TG 125/E is infinitely adjustable from approx. 250 – 800 m/min. In this way, optimal adaptation to various material conditions is possible. Please note that the circumferential speed of the grinding disc is greatest at the edge and reduces towards the middle.

General recommendations on the selection of the grinding speed are difficult; it may be necessary to experiment somewhat to find out the correct grinding speed for "its" material and workpiece.

Based on experience, non-ferrous metals and plastic require lower grinding speeds than soft and hard wood; this also applies for ceramics and glass.

But as stated: Recommendations are difficult, the correct speed depends on the material, contact pressure and friction and grain size of the grinding wheels.

## **7 Care and maintenance**

---

### **Caution:**

Before cleaning, adjusting, service or repair, disconnect the mains plug!

#### *Note:*

*The machine is largely maintenance free. To ensure a long service life, however, the machine should be cleaned with a soft cloth, handbrush or paintbrush after each time it is used. A vacuum cleaner is also recommended here. A vacuum cleaner should always be used during work!*

The outside of the housing can be cleaned with a soft, possibly damp cloth. In this process, mild soap or another suitable cleaning agent can be used. Solvents or cleaning agents containing alcohol (e.g. petrol, cleaning alcohols etc.) should be avoided, since these can attack the plastic cases.

## **8 Disposal**

---

Please do not dispose of this machine in household refuse! The machine contains materials that can be recycled. If you have any questions about this, please contact your local recycling company or other relevant communal facilities.

## **9 EC Declaration of Conformity**

---

Name and address:

PROXXON S.A.  
6-10, Härebiërg  
L-6868 Wecker

Product designation: TG 125/E  
Article No.: 27060

In sole responsibility, we declare that this product conforms to the following directives and normative documents:

### **EU EMC Directive 2014/30/EC**

DIN EN 55014-1/05.2012  
DIN EN 55014-2/02.2016  
DIN EN 61000-3-2/03.2015  
DIN EN 61000-3-3/03.2014

### **EU Machinery Directive 2006/42/EC**

DIN EN 62841-1/07.2016  
DIN EN 62841-3-4/12.2016

Date: 07.12.2016

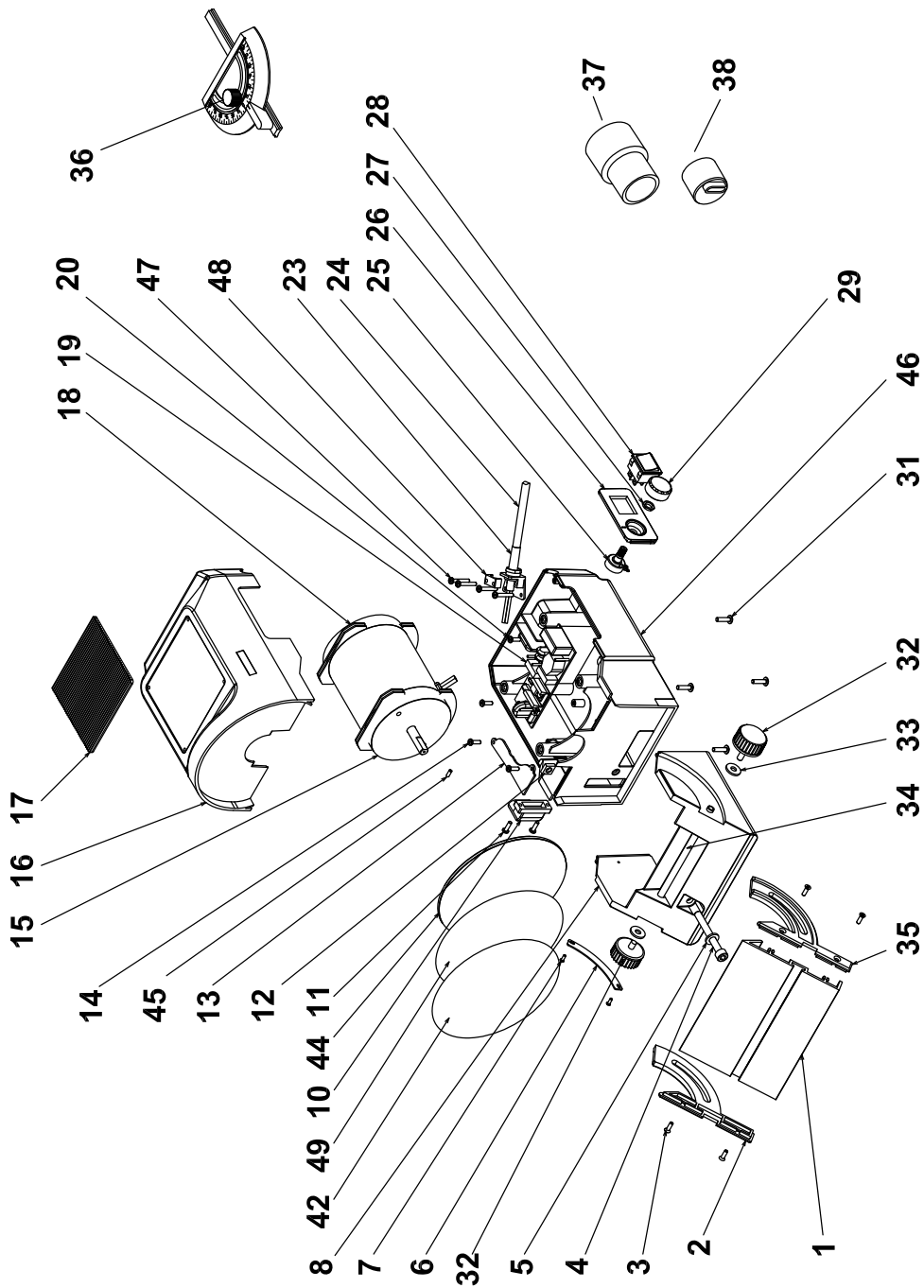


Dipl.-Ing. Jörg Wagner

PROXXON S.A.  
Machine Safety Department

The CE document authorized agent is identical with the signatory.

27060 - 01	Table
27060 - 02	Table guide with marker
27060 - 03	Screw
27060 - 04	Screw
27060 - 05	Washer
27060 - 06	Scale
27060 - 07	Screw
27060 - 08	Receptacle for table guide
27060 - 10	Connecting piece
27060 - 11	Screw
27060 - 12	Square nut
27060 - 13	Cover for dust channel
27060 - 14	Screw
27060 - 15	Motor
27060 - 16	Upper casing
27060 - 17	Rubber mat, adhesive
27060 - 18	Holding band
27060 - 19	Board
27060 - 20	Screw
27060 - 23	Tension relief
27060 - 24	Power cord
27060 - 25	Potentiometer
27060 - 26	Panel
27060 - 27	Nut
27060 - 28	Power switch
27060 - 29	Adjusting knob
27060 - 31	Screw
27060 - 32	Knurled screw
27060 - 33	Washer
27060 - 34	Rod
27060 - 35	Table guide
27060 - 36	Mitre gauge
27060 - 37	Dust chute
27060 - 38	Reducing socket
27060 - 39	Adhesive sanding disc (not shown)
27060 - 40	Silicone disc (not shown)
27060 - 41	Vice (not shown)
27060 - 42	Grinding disc (Accessory)
27060 - 44	Grinding disc
27060 - 45	Set screw
27060 - 46	Downer casing
27060 - 47	Screw
27060 - 48	Strain relief
27060 - 49	Silicone disc
27060 - 99	Manual and Safety instructions (not shown)



# PROXXON

**GB** **Service note**

All PROXXON products are thoroughly inspected after production. Should a defect occur nevertheless, please contact the dealer from whom you purchased the product. Only the dealer is responsible for handling all legal warranty claims which refer exclusively to material and manufacturer error. Improper use, such as capacity overload, damage due to outside influences and normal wear are excluded from the warranty. You will find further notes regarding "Service and Spare Parts Management" at [www.proxxon.com](http://www.proxxon.com).