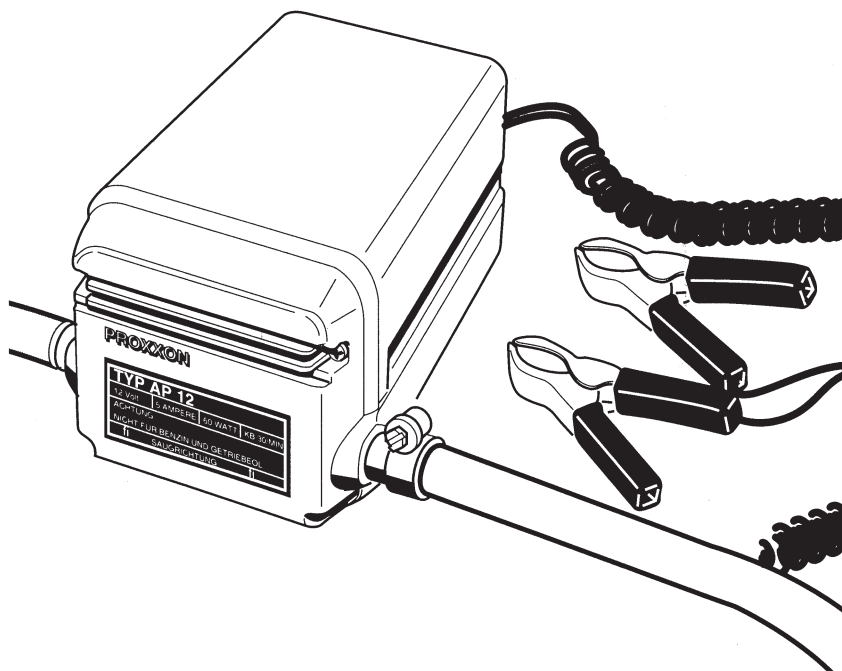


# PROXXON

## AP 12 Absaugpumpe



# Manual

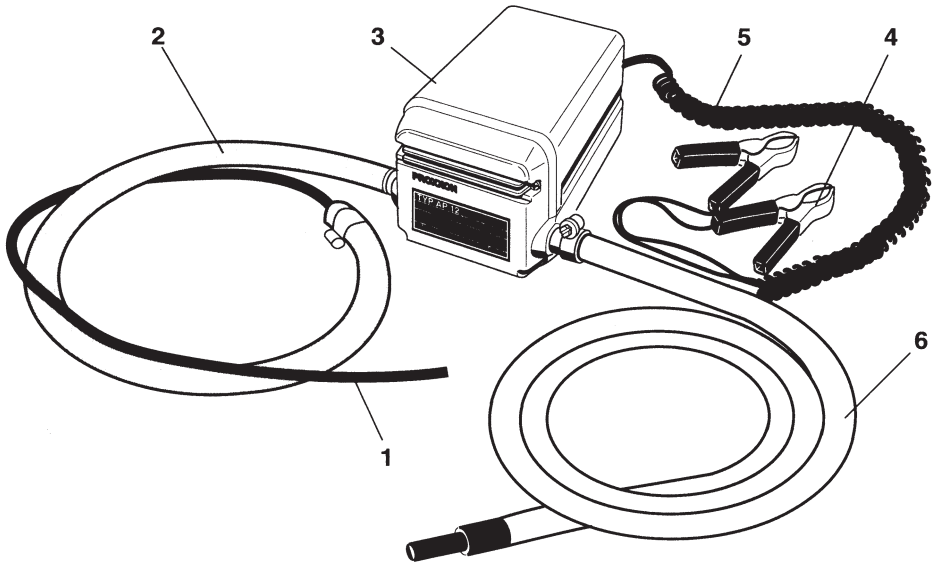


Fig. 1



## Translation of the Original Operating Instructions Scavenge pump AP 12

Dear customer!

The PROXXON scavenge pump is the ideal equipment for quick and clean oil changes. The oil is simply drawn out through the oil dipstick bore.

### **This manual comprises:**

- safety regulations
- operating instructions
- spare parts list.

### ***Please note:***

### **Using this manual will**

---

- help you to understand the scavenge pump, avoid malfunctions due to incorrect operation,
- increase the lifetime of the pump.

Always keep this manual close at hand.

Do not operate the pump unless you are fully familiar with it.

Follow the instructions.

### **PROXXON will not assume liability for safe functioning:**

- if the pump is used in a way which does not comply with the usual operation,
- if it is used for purposes other than those mentioned in the instructions,
- if the safety instructions are not observed.

### **No warranty claims can be lodged for damage resulting from:**

- operating errors,
- inadequate maintenance
- improper use.

Please observe the safety regulations for your own safety.

We reserve the right for technical modifications without prior notification.

We wish you much success with your new scavenge pump.

## **Safety regulations**

---

Please read the following safety regulations thoroughly and follow them before starting to work with the pump.

You will thereby reduce any risks for your own health and safety and avoid environmental damage.

- Set the scavenge pump up securely.
- Fasten the drain hose properly.
- Keep the connecting cable and pump away from excessive heat and sharp edges.
- Before starting to work, make sure that the pump is correctly connected, plus with plus and minus with minus.
- Do not pump petrol, paraffin and other easily inflammable liquids.
- Pump off only warm engine oil.
- Do not pump off any oil as long as the engine is running.
- Protect the environment. Collect old oil in suitable containers.
- Please note that it is strictly forbidden to pollute the environment through improper disposal of used oil!
- Properly dispose your used oil only at the collection points provided for this purpose at filling stations and oil dealers.
- Clean pump and attachment parts thoroughly after finishing work.
- Use only original PROXXON spare parts.

### **Legend**

---

1. Sound, 6 mm diameter
2. Suction hose  $\varnothing$  10 mm
3. Scavenge pump
4. Terminal clamps
5. Power supply cable
6. Drain hose  $\varnothing$  10 mm

### **Description of pump**

---

The PROXXON scavenge pump is a vane-type pump with brass lamellas.

It is driven by a 12 Volt D.C. motor via a reduction gear.

A 12 Volt vehicle battery can be used as power source.

Both connections on the pump are for hoses for an internal diameter of 10 mm.

The outer diameter of the suction sound is 6 mm. The pump can therefore be only used, if the inner diameter of the oil dipstick tube is bigger than 6 mm.

You can use this pump for engine oil, diesel and heating oil.

## Technical data

---

Motor:	12 V D. C.
Power draw:	approx. 5A
Noise level:	≤ 70 dB(A)
Vibration:	≤ 2.5 m/s <sup>2</sup>
Pump	Vane type pump with Brass lamella and reduction gear

max. flow rate with diesel resp.  
heating oil: approx. 250 l/h  
max. flow when changing oil  
with the sound (at 40 °C oil temperature): approx. 3 l/min

## Operating the scavenge pump

---

### **Danger!**

Do not pump petrol, paraffin or other easily inflammable liquids!

1. For changing oil, drive the vehicle until the oil has a temperature of approx. 40°-50° C.

### **Attention!**

Never run the engine without oil!

2. Shut the engine down
3. Push the suction hose (textile hose suction sound) onto the pump socket.

### **Attention!**

Fasten the drain hose with a clamp, as otherwise the oil pressure may loosen the hose.

4. Fasten the drain hose (transparent) with the hose clamp on the drain socket.

### **Note**

For packing reasons the suction sound has been bent very tight. Unwind it first and straighten it properly before inserting it through the dipstick tube into the engine. If the sound bends inside the engine, the pump will draw no or not enough oil.



To prevent overloading the motor, do not operate the suction pump with no load or without the suction sensor.

5. Insert the suction sound into the oil dipstick tube and push it gently down to the lowest position of the oil pan.

### **Attention!**

Do not let old oil seep into the ground or into the sewage system. You will make yourself liable to prosecution and you will also harm our environment. Collect old oil and dispose of environmentally.

6. Hold the drain hose into a suitable container.
7. Connect the scavenge pump to the 12 V battery. Make sure that the poles are connected correctly. Red clamp on plus, black clamp on minus.

8. Switch the pump on and pump the oil out.
9. Switch the unit off when pumping is finished. Remove both suction and drain hoses.
10. Fill in fresh engine oil according to the maintenance instructions for your car. Reinsert the dipstick and check the oil level.

### **Note**

After finishing work clean the pump thoroughly. If possible clean it by pumping some diesel oil or fresh oil. Then plug the suction and the pressure hose together and store the pump where it is protected against dust.

Please do not dispose off the machine!



### **Disposal:**

Please do not dispose of the device in domestic waste! The device contains valuable substances that can be recycled. If you have any questions about this, please contact your local waste management enterprise or other corresponding municipal facilities.

## EC Declaration of Conformity

---

Name and address of the manufacturer:

PROXXON S.A.  
6-10, Hårebiërg  
L-6868 Wecker

Product designation: AP 12  
Article No.: 25262

In sole responsibility, we declare that this product conforms to the following directives and normative documents:

**EU EMC Directive** 2014/30/EC

**EU Low Voltage Directive** 2014/35/EU

Date: 11.09.2017

Dipl.-Ing. Jörg Wagner

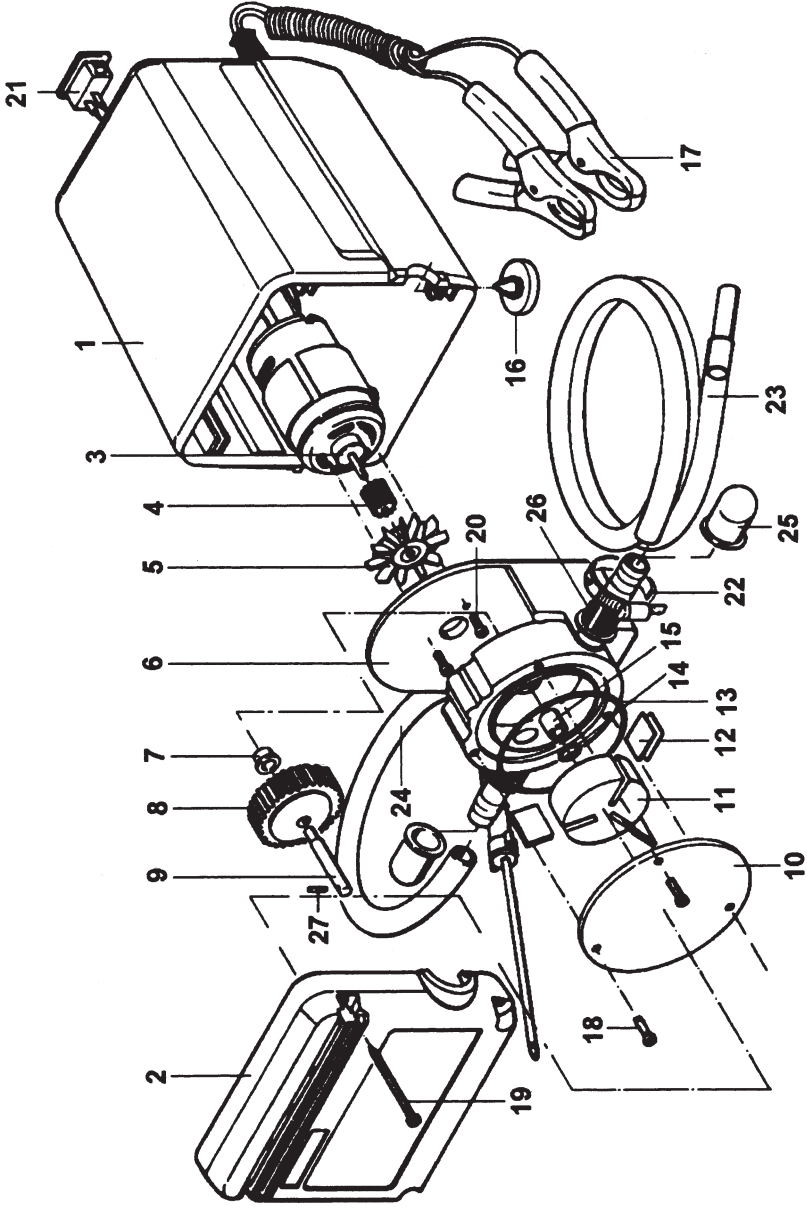
PROXXON S.A.  
Machine Safety Department

The CE document authorized agent is identical with the signatory.

## Spare Parts List

---

ET -Nr.:	Description
25262 / 01	Motor casing
25262 / 02	Cover
25262 / 03	Motor
25262 / 04	Pinion
25262 / 06	Pump casing
25262 / 07	Bearing
25262 / 08	Gear
25262 / 09	Shaft
25262 / 10	Pump cover
25262 / 11	Rotor
25262 / 12	Lamella
25262 / 13	Outer O-Ring
25262 / 14	Inner O-Ring
25262 / 15	Bearing
25262 / 16	Rubber foot
25262 / 17	Supply
25262 / 18	Screw for pump casing
25262 / 19	Screw for motor casing
25262 / 20	Fastening screw for Motor/Pump
25262 / 21	Power switch
25262 / 22	Hose clamber
25262 / 23	Drain hose
25262 / 24	Intake hose with probe
25262 / 25	Rubber cap
25262 / 26	Rubber bushing
25262 / 27	Pin
25262 / 97	Packaging
25262 / 99	Manual



# PROXXON

**GB** Service note

All PROXXON products are thoroughly inspected after production. Should a defect occur nevertheless, please contact the dealer from whom you purchased the product. Only the dealer is responsible for handling all legal warranty claims which refer exclusively to material and manufacturer error.

Improper use, such as capacity overload, damage due to outside influences and normal wear are excluded from the warranty.

You will find further notes regarding "Service and Spare Parts Management" at [www.proxxon.com](http://www.proxxon.com).