

# PROXXON

## BS/E



## Manual

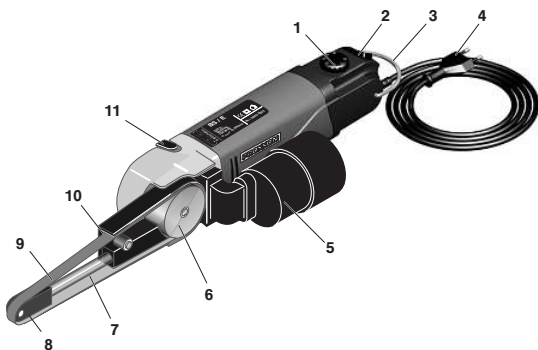


Fig. 1



Fig. 2

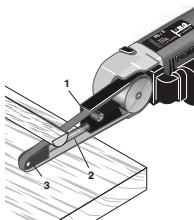


Fig. 3

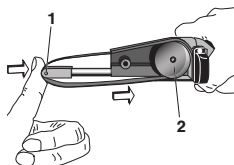


Fig. 4

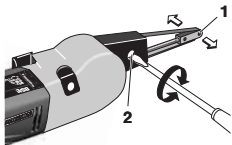


Fig. 5

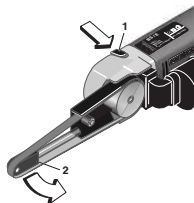


Fig. 6

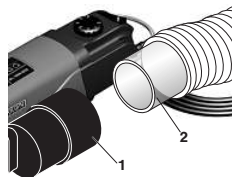


Fig. 7

## **GB** Translation of the Original Operating Instructions PROXXON - BS/E

### **WARNING!**

#### **Read all safety warnings and instructions!**

Failure to follow all safety warnings and instructions listed below may result in electric shock, fire and/or serious injury.



### **KEEP ALL SAFETY WARNINGS AND INSTRUCTIONS FOR THE FUTURE !**

#### **Attention:**

**Hold power tool by insulated gripping surfaces only, when performing an operation where the cutting accessory may contact hidden wiring or its own cord.** Cutting accessory contacting a "live" wire may make exposed metal parts of the power tool "live" and could give the operator an electric shock.

### **Legend**

1. Speed regulator knob
2. ON - OFF switch
3. Unit hoop
4. Connection cable
5. Adapter for dust extraction
6. Drive roller
7. Tensioning bar
8. Tensioning roller
9. Grinding belt
10. Adjusting screw for belt run
11. Retaining knob

### **Scope of delivery**

- 1 pc. Belt sander BS/E
- 1 pc. Storage case
- 1 pc. Operating instructions
- 1 pc. Safety guidelines
- 2 pcs. Fan sander K 80
- 2 pcs. Fan sander K 180

### **Description of the machine**

The PROXXON band grinder BS/E

is a light, compact and user-friendly unit.

It can be used in modelling, tool manufacture and mould manufacture, but also in repair work on motor vehicles.

The unit enables metal, plastic and wood to be processed.

It can be used for regrinding moulds, grinding small apertures and for polishing.

It can additionally be used for deburring and breaking edges, removing paint and finely grinding surfaces.

Turning is carried out via a maintenance-free mitre gear.

The grinding belt is driven by a robust aluminium drum which is equipped with a double-bearing.

The tensioning roller is also equipped with ball bearings.

The grinding head may be swivelled, so that work in awkward places is also possible.

### **Technical data**

#### **Dimensions, weight:**

Length	approx. 330 mm
Weight	approx. 650 g
Grinding belt length	330 x 10 mm
Head can be rotated by	60°

#### **Motor:**

Voltage:	230 V, 50/60 Hz
Power consumption:	80 W
hort-term operation:	KB 5 min
Belt speed:	225 bis 450 rpm
Noise generated:	LPA: 90dB(A) LWA: 103 dB(A)

General measuring uncertainty	K=3 dB
Vibration at handle:	≤ 2.5 m/sec <sup>2</sup>

Please note that the sound and vibration measurements in particular have been performed with Proxxon bits and cutters. When using third-party brands we cannot guarantee compliance with the statements given here!

For use in dry environments only



Protection class II device



Please do not dispose off the machine!



For your safety, always wear hearing protection while working!



#### **Risk of injury!**

Never work without dust protection mask and safety glasses. Some dusts have a hazardous effect! Materials containing asbestos may not be machined!



### **Operation**

Working with the unit.

#### **Attention!**

Provide a secure fixation of the workpiece! Workpiece should be clamped with a suitable device. So the ejection of the workpiece is prevented.

### **Danger**

Some types of wood or even varnish residues (or similar) can generate harmful dusts while working. If you are unsure of the harmlessness of your material to be ground, please wear a dust protection mask! In any case, ensure your working area is well ventilated while working!

1. Switch unit on at switch **2** (Fig. 2) and adjust the speed at knob 1 in accordance with the operation.
2. The grinding surface **2** (Fig. 3) is particularly suitable for processing plane surfaces. Curves are best processed with grinding surface **1**. Surface **3** is suitable for operations in narrow apertures and cavities.

### **Note:**

High grinding performance is achieved not by applying excessive pressure but by employing a correct and even belt speed.

## **Replacing the grinding belt**

### **Attention!**

Disconnect from the mains before replacing the grinding belt.

1. Depress tensioning roller **1** (Fig. 4) axially and remove grinding belt from the drive roller (2).
2. First position new grinding belt around the tensioning roller (1). Then press the tensioning roller backwards and position the belt over the drive roller (2).

## **Adjusting the grinding belt**

The grinding belt must run in the centre of the tensioning roller. If this is not the case, it must be readjusted.

### **Danger!**

#### **Danger of injury!**

1. Switch unit on
2. Select lowest speed
3. Turn adjusting screw **2** (Fig. 5) to left or right until the belt runs in the centre of the tensioning roller (1).

## **Adjusting the grinding head**

1. Switch unit off
2. Press retaining knob **1** (Fig. 6) in and adjust the grinding head (2) to the desired angle.
3. Release retaining knob. The grinding head engages.

## **Connecting the vacuum cleaner**

1. Connect parts of the connection adapter **1** (Fig. 7).

### **Note:**

The adapter parts can be connected in such a way that vacuum cleaner pipes of various diameters may be connected.  
2. Insert vacuum cleaner hose (2) into the connection adapter (1).

## **Maintenance, cleaning and care**

### **Attention:**

**Disconnect the mains plug prior to every adjustment, maintenance measure or repair!**

### **Note:**

Every device is dirtied by dust when working with wood. Cleaning is therefore essential. To ensure a long service life, however, the machine should be cleaned with a soft cloth or brush after each use.

Mild soap or other suitable cleaning agent may be used in this context. Solvents or cleaning agents containing alcohol (e.g. petrol, cleaning alcohols, etc.) should be avoided, since these can attack plastic casings.

The apertures required for cooling the motor must always be kept free of dust and dirt.

### **Accessories**

For more detailed information on accessories, please request our device catalogue from the address specified on the last page in the warranty information.

### **Please note in general:**

Proxxon bits and cutters have been designed to work with our machines, which makes them optimal for their use.

We will not assume any liability whatsoever for the safe and proper function of our devices when using third-party bits and cutters!

### **Service note**

### **Please note:**

The mains power input may only be replaced by our Proxxon Service Department or a qualified specialist!

## **Disposal**

Please do not dispose of the device in domestic waste! The device contains valuable substances that can be recycled. If you have any questions about this, please contact your local waste management enterprise or other corresponding municipal facilities.

## EC Declaration of Conformity

Name and address:

PROXXON S.A.  
6-10, Härebjerg  
L-6868 Wecker

Product designation: BS/E  
Article No.: 28536

In sole responsibility, we declare that this product conforms to the following directives and normative documents:

**EU EMC Directive**      **2014/30/EC**  
DIN EN 55014-1 / 05.2012  
DIN EN 55014-2 / 02.2016  
DIN EN 61000-3-2 / 03.2015  
DIN EN 61000-3-3 / 03.2014

**EU Machinery Directive**      **2006/42/EC**  
DIN EN 62841-1 / 07.2016  
DIN EN 62841-2-4 / 05.2015

Date: 08.09.2017



Dipl.-Ing. Jörg Wagner

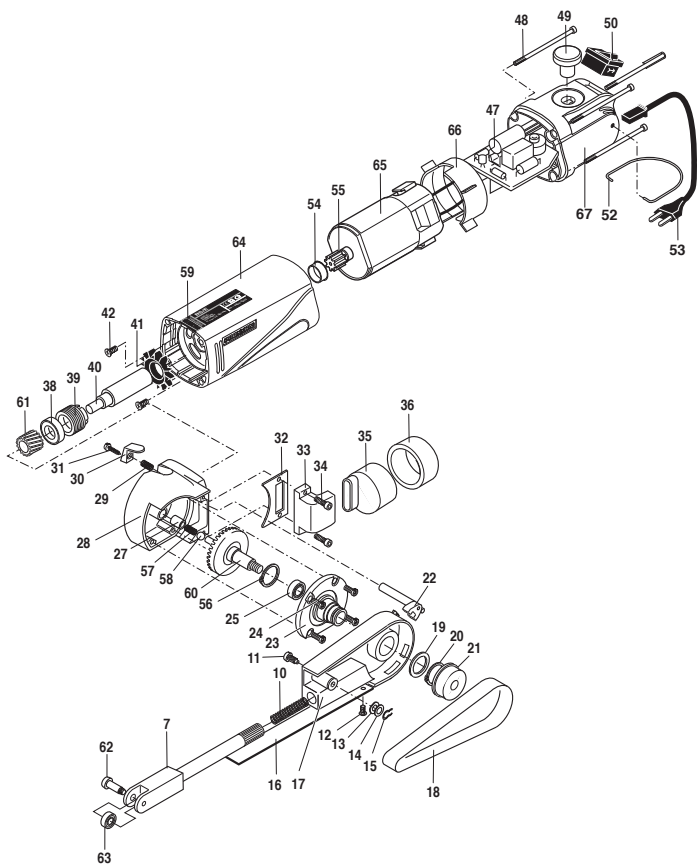
PROXXON S.A.  
Machine Safety Department

The CE document authorized agent is identical with the signatory.

## Spare Parts List

---

ET - Nr.:	Description
28536-07	Grip head
28536-10	Spring
28536-11	Screw
28536-12	Screw
28536-13	Wave washer
28536-14	Washer
28536-15	Retaining ring
28536-16	Support for abrasive belt
28536-17	Bracket
28536-18	Abrasive belt
28536-19	Washer
28536-20	Retaining ring
28536-21	Driving wheel
28536-22	Plunger pin
28536-23	Flange
28536-24	Screw
28536-25	Bearing
28536-27	Bushing
28536-28	Aluminum head
28536-29	Spring
28536-30	Knob
28536-31	Screw
28536-32	Plate
28536-33	Connector
28536-34	Screw
28536-35	Adapter 1
28536-36	Adapter 2
28536-38	Bearing
28536-39	Ring nut
28536-40	Shaft
28536-41	Fan
28536-42	Screw
28536-47	Board
28536-48	Screw
28536-49	Adjusting knob
28536-50	On-off-switch
28536-52	Bow
28536-53	Power supply cord
28536-54	Centering ring
28536-55	Pinion gear
28536-56	Retaining ring
28536-57	Spring
28536-58	Ball
28536-59	Label
28536-60	Ring gear
28536-61	Pinion gear
28536-62	Screw
28536-63	Bearing
28536-64	Housing
28536-65	Motor
28536-66	Backup-ring
28536-67	Cap
28536-97	Packaging
28536-99	Manual



# PROXXON

**GB** Service note

All PROXXON products are thoroughly inspected after production. Should a defect occur nevertheless, please contact the dealer from whom you purchased the product. Only the dealer is responsible for handling all legal warranty claims which refer exclusively to material and manufacturer error.

Improper use, such as capacity overload, damage due to outside influences and normal wear are excluded from the warranty.

You will find further notes regarding "Service and Spare Parts Management" at [www.proxxon.com](http://www.proxxon.com).